





**SITE S&E NARRATIVE:**

THE PROPOSED REDEVELOPMENT PROJECT WILL REMOVE EXISTING STRUCTURES AND SITE IMPROVEMENTS AND CONSTRUCTION OF A NEW 2,328 SF FOOD SERVICE USE BUILDING, THE APPROXIMATELY 0.68 ACRE SITE WILL BE DEVELOPED AS A SINGLE PHASE PROJECT. APPROXIMATELY 0.6 ACRES OF SITE AREA WILL BE DISTURBED DURING CONSTRUCTION. THE EARTHWORK IS PLANNED TO START IN MAY 2024 AND BE COMPLETED IN DECEMBER 2024.

**TEMPORARY EROSION AND SEDIMENTATION CONTROL MAINTENANCE (THROUGHOUT CONSTRUCTION)**

THE SITE CONTRACTOR WILL BE RESPONSIBLE FOR IMPLEMENTING EACH CONTROL SHOWN ON THE SEDIMENTATION AND EROSION CONTROL PLAN. THE SITE CONTRACTOR WILL INSPECT ALL SEDIMENT AND EROSION CONTROL STRUCTURES PERIODICALLY AND AFTER EACH RAINFALL EVENT. RECORDS OF THE INSPECTIONS WILL BE PREPARED AND MAINTAINED ON-SITE BY THE CONTRACTOR. SILT SHALL BE REMOVED FROM BEHIND BARRIERS IF GREATER THAN 6-INCHES DEEP OR AS NEEDED. DAMAGED OR DETERIORATED ITEMS WILL BE REPAIRED IMMEDIATELY AFTER IDENTIFICATION. THE UNDERSIDE OF COMPOST FILTER SOCK SHOULD BE KEPT IN CLOSE CONTACT WITH THE EARTH AND RESET AS NECESSARY. SEDIMENT THAT IS COLLECTED IN STRUCTURES SHALL BE DISPOSED OF PROPERLY AND COVERED IF STORED ON-SITE. EROSION CONTROL STRUCTURES SHALL REMAIN IN PLACE UNTIL ALL DISTURBED EARTH HAS BEEN SECURELY STABILIZED. AFTER REMOVAL OF STRUCTURES, DISTURBED AREAS SHALL BE STABILIZED AS SOON AS PRACTICAL. MAINTAIN THE CONSTRUCTION ENTRANCE IN A CONDITION WHICH WILL PREVENT TRACKING AND WASHING OF SEDIMENTS ONTO PAVED SURFACES. CONSTRUCTION SEQUENCE

1. THE SITE CONTRACTOR SHALL BE FULLY RESPONSIBLE TO CONTROL CONSTRUCTION SUCH THAT SEDIMENTATION SHALL NOT AFFECT ROADS/HIGHWAYS AND THEIR DRAINAGE SYSTEM, NEIGHBORING PROPERTIES, AND REGULATORY PROTECTED AREAS, WHETHER SUCH SEDIMENTATION IS CAUSED BY WATER, WIND, OR DIRECT DEPOSIT. PRIOR TO CONSTRUCTION, THE APPLICANT SHALL PROVIDE THE CITY OF WORCESTER WITH THE NAME OF CONTACT AND 24 HOUR CONTACT INFORMATION.
2. CONTRACTOR SHALL CONTACT DIG-SAFE AT LEAST 72 HOURS PRIOR TO STARTING CONSTRUCTION AND SHALL CONTACT THE CITY OF WORCESTER OFFICE OF PLANNING AT LEAST 1 WEEK PRIOR TO STARTING CONSTRUCTION.
3. PRIOR TO ANY OTHER ACTIVITY ON THE SITE, THE EROSION CONTROLS SHALL BE INSTALLED IN ACCORDANCE WITH THE DESIGN PLAN. AFTER INSTALLATION, EROSION CONTROL TO BE INSPECTED BY THE DESIGN ENGINEER.
4. INSTALL STABILIZED VEHICLE CONSTRUCTION EXIT.
5. INSTALL EROSION AND SEDIMENT CONTROLS IN ACCORDANCE WITH THE E&S PLAN FOR THE SITE INCLUDING COMPOST FILTER SOCK BARRIERS AND CATCH BASIN SEDIMENT TRAPS.
6. COMPLETE DEMOLITION
7. CONSTRUCT BUILDING AND UNDERGROUND UTILITIES. INSTALL CATCH BASIN SEDIMENT TRAPS IN ALL NEW CATCH BASINS.
8. INSTALL PAVEMENT BASE & FIRST COURSE OF BITUMINOUS CONCRETE.
9. INSTALL LANDSCAPING & LOAM AND SEED ALL DISTURBED AREAS.
10. WHEN ALL OTHER WORK HAS BEEN COMPLETED, REPAIR AND SWEEP ALL PAVED AREAS FOR THE FINAL COURSE OF PAVING. INSPECT THE DRAINAGE SYSTEM AND CLEAN AS NEEDED.
11. INSTALL FINAL COURSE OF PAVEMENT
12. EROSION CONTROL SHALL BE REMOVED UPON STABILIZATION OF THE SITE.

NOTE: ANY DEVIATION FROM THIS PLAN MUST BE APPROVED BY THE DESIGN ENGINEER, AND CITY OF WORCESTER ZONING ENFORCEMENT OFFICE PRIOR TO CONSTRUCTION.

**EROSION AND SEDIMENTATION CONTROL TECHNIQUES**

THE FOLLOWING EROSION AND SEDIMENTATION CONTROLS SHALL BE EMPLOYED BY THE CONTRACTOR DURING THE EARTHWORK AND CONSTRUCTION PHASES OF THE PROJECT IN ACCORDANCE WITH THE MASSACHUSETTS' ENVIRONMENTAL PROTECTION AGENCY GUIDELINES FOR SOIL EROSION AND SEDIMENT CONTROL.

**COMPOST FILTER SOCKS**  
COMPOST FILTER SOCKS WILL BE PLACED TO TRAP SEDIMENT TRANSPORTED BY RUNOFF BEFORE IT REACHES THE DRAINAGE

**DEMOLITION NOTES**

1. CONTRACTOR SHALL CALL "DIG SAFE" (1-800-922-4455) AT LEAST 72 HOURS BUT NO MORE THAN 30 DAYS BEFORE EXCAVATING.
2. CONTRACTOR SHALL BE RESPONSIBLE FOR SITE SECURITY AND JOB SAFETY. CONSTRUCTION ACTIVITIES SHALL BE IN ACCORDANCE WITH OSHA STANDARDS AND LOCAL REQUIREMENTS.
3. THIS PLAN IS PROVIDED SOLELY FOR INFORMATIONAL PURPOSES. THE CONTRACTOR IS RESPONSIBLE TO IDENTIFY AND REMOVE ALL EXISTING MAN-MADE OR NATURAL FEATURES WITHIN THE LIMIT OF WORK NECESSARY TO COMPLETE THE PROPOSED DEVELOPMENT, INCLUDING BUT NOT LIMITED TO BUILDINGS, STRUCTURES, PAVEMENTS, SLABS, CURBING, FENCES, UTILITY POLES, SIGNS, ETC. UNLESS INDICATED OTHERWISE ON THE DRAWINGS.
4. CONTRACTOR SHALL REMOVE AND DISPOSE OF EXISTING MANMADE SURFACE FEATURES WITHIN THE LIMIT OF WORK INCLUDING BUILDINGS, STRUCTURES, PAVEMENTS, SLABS, CURBING, FENCES, UTILITY POLES, SIGNS, ETC. UNLESS INDICATED OTHERWISE ON THE DRAWINGS. REMOVE AND DISPOSE OF EXISTING UTILITIES, FOUNDATIONS AND UNSUITABLE MATERIAL BENEATH AND FOR A DISTANCE OF 10 FEET BEYOND THE PROPOSED BUILDING FOOTPRINT
5. EXISTING UTILITIES SHALL BE TERMINATED, UNLESS OTHERWISE NOTED, IN CONFORMANCE WITH LOCAL, STATE AND INDIVIDUAL UTILITY COMPANY STANDARD SPECIFICATIONS AND DETAILS. THE CONTRACTOR SHALL COORDINATE UTILITY SERVICE DISCONNECTS WITH THE UTILITY REPRESENTATIVES. EXISTING UTILITIES TO REMAIN SHALL BE MAINTAINED & PROTECTED AGAINST DAMAGE DURING DEMOLITION OPERATIONS.
6. CONTRACTOR SHALL DISPOSE OF DEMOLITION DEBRIS IN ACCORDANCE WITH APPLICABLE FEDERAL, STATE AND LOCAL REGULATIONS, ORDINANCES AND STATUTES. CONSULT ENVIRONMENTAL ENGINEER PRIOR TO DEMOLITION.
7. FURNISH, ERECT AND MAINTAIN ALL TEMPORARY BARRICADES, FENCES, COVERINGS, ENCLOSURES, SIGNS AND LIGHTING AS MAY BE REQUIRED TO CARRY ON DEMOLITION WORK IN A SAFE AND LEGAL MANNER.
8. CONTRACTOR SHALL PREVENT DUST, SEDIMENT, AND DEBRIS FROM EXITING THE SITE AND SHALL BE RESPONSIBLE FOR CLEANUP, REPAIRS AND CORRECTIVE ACTION IF SUCH OCCURS. ADJOINING STREETS AND PROPERTIES TO BE KEPT FREE OF DEBRIS RESULTING FROM THE DEMOLITION AND SHALL BE CLEANED ON A DAILY BASIS OR AS NEEDED. DUST CONTROL TREATMENTS SHALL BE APPLIED AS NECESSARY TO CONTROL AND REDUCE THE AMOUNT OF DUST WHICH MAY CAUSE OFF SITE DAMAGE, BE A HEALTH HAZARD TO HUMANS, WILDLIFE AND PLANT LIFE, OR POSE A HAZARD TO TRAFFIC SAFETY.
9. AREAS OUTSIDE THE LIMITS OF PROPOSED WORK DISTURBED BY THE CONTRACTOR'S OPERATIONS SHALL BE RESTORED BY THE CONTRACTOR TO THEIR ORIGINAL CONDITION AT THE CONTRACTOR'S EXPENSE.
10. DAMAGE RESULTING FROM CONSTRUCTION LOADS SHALL BE REPAIRED BY THE CONTRACTOR AT NO ADDITIONAL COST TO OWNER.

SYSTEM OR LEAVES THE CONSTRUCTION SITE. FILTER SOCKS WILL BE PLACED ONTO THE EXISTING GROUND AND STAKED IN PLACE TO MINIMIZE UNDERCUTTING BY RUNOFF.

**CATCH BASIN PROTECTION**  
NEWLY CONSTRUCTED AND EXISTING CATCH BASINS WILL BE PROTECTED WITH CATCH BASIN SEDIMENT TRAPS THROUGHOUT CONSTRUCTION.

**GRAVEL AND CONSTRUCTION ENTRANCE/EXIT**  
A TEMPORARY CRUSHED-STONE CONSTRUCTION ENTRANCE/EXIT WILL BE CONSTRUCTED.

**STOCKPILE MANAGEMENT**  
SIDESLOPES OF STOCKPILED MATERIAL SHALL BE NO STEEPER THAN 2:1. STOCKPILES NOT USED WITHIN 30 DAYS NEED TO BE SEEDED AND MULCHED IMMEDIATELY AFTER FORMATION OF THE STOCKPILE. COMPOST FILTER SOCKS ARE TO BE PLACED AROUND THE STOCKPILE AREA APPROXIMATELY 10 FEET FROM THE TOW OF SLOPE.

**DUST CONTROL**  
PERIODICALLY MOISTEN EXPOSED SURFACES ON UNPAVED TRAVELWAYS TO KEEP THE TRAVELWAY DAMP AND REDUCE DUST.

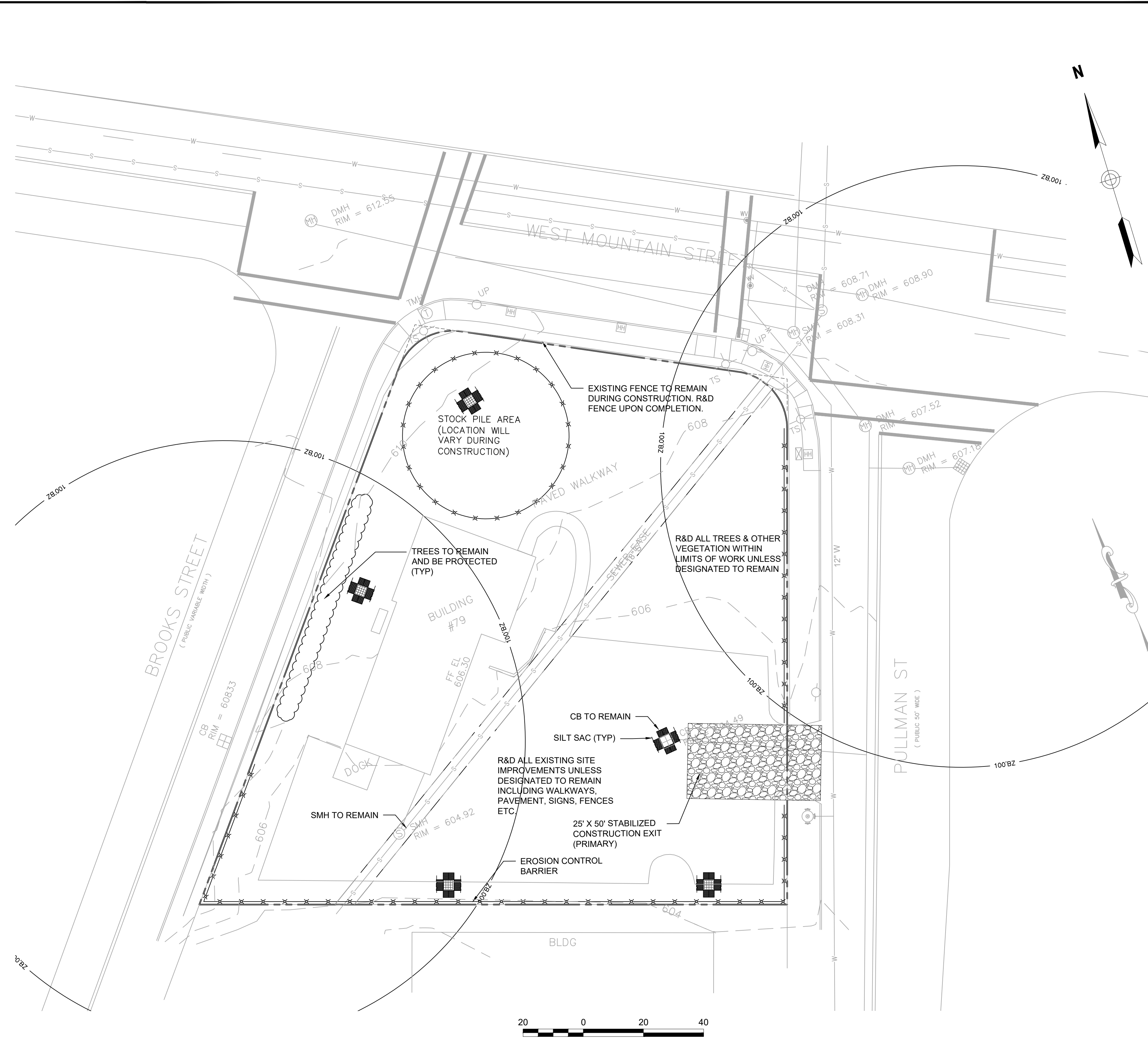
**POST CONSTRUCTION STORMWATER MANAGEMENT**

THE PROPERTY OWNER SHALL BE RESPONSIBLE FOR ENSURING THAT STORMWATER MANAGEMENT SYSTEMS BE INSPECTED AND MAINTAINED. THE FOLLOWING PLAN COMPONENTS SHALL BE ADHERED TO:

**SOURCE CONTROL**  
A COMPREHENSIVE SOURCE CONTROL PROGRAM WILL BE IMPLEMENTED AT THE SITE, WHICH INCLUDES: REGULAR PAVEMENT SWEEPING AT A MINIMUM INTERVAL OF 4 TIMES PER YEAR; CATCH BASIN CLEANING, AND MAINTENANCE; CLEARING OF LITTER FROM PARKING AREAS AND PERIMETER LANDSCAPED AREAS; INSPECTING STORMCEPTOR WATER QUALITY STRUCTURES TWICE ANNUALLY AND REMOVING ACCUMULATED SAND, SEDIMENT, AND FLOATABLE PRODUCTS AS NEEDED.

**DEEP SLUMP CATCH BASINS**  
CATCH BASINS AT THE SITE ARE TO BE CONSTRUCTED WITH SUMPS (MINIMUM 4'-FEET) TO TRAP DEBRIS AND SEDIMENTS. CATCH BASINS WILL BE INSPECTED 4 TIMES PER YEAR. SEDIMENT WILL BE REMOVED WHEN ACCUMULATED TO HALF THE DISTANCE TO THE LOWEST INVERT.

**SNOW SHELF**  
INSPECT SNOW SHELVES ONCE ANNUALLY, IN THE SPRING, FOR ACCUMULATED SEDIMENT. NECESSARY SEDIMENT REMOVAL, EARTH REPAIR, AND/OR RESEEDING WILL BE PERFORMED IMMEDIATELY UPON IDENTIFICATION.



Prepared By:  
**MIDPOINT**  
ENGINEERING • CONSULTING  
37 Sutton Road  
Webster, MA 01570  
(508) 721-1900  
pdoherty@midpointengineering.com



Prepared For:  
**LACY TOPAZ, LLC**  
37 SUTTON ROAD  
WEBSTER, MA 01570  
(508) 721-0005

Date	Revision	Scale
Jan. 30, 2024		1" = 20'

No.	Revision	Date
1	REVIEW COMMENTS	2/28/24

Project Title:  
**PROPOSED COMMERCIAL REDEVELOPMENT**  
79 PULLMAN ST  
Worcester, MA

Issued For:  
**Permit**

Not for Construction  
Drawing Title:  
**Site Preparation Soil Erosion & Sediment Control Plan**

Issued For:  
**C-1**





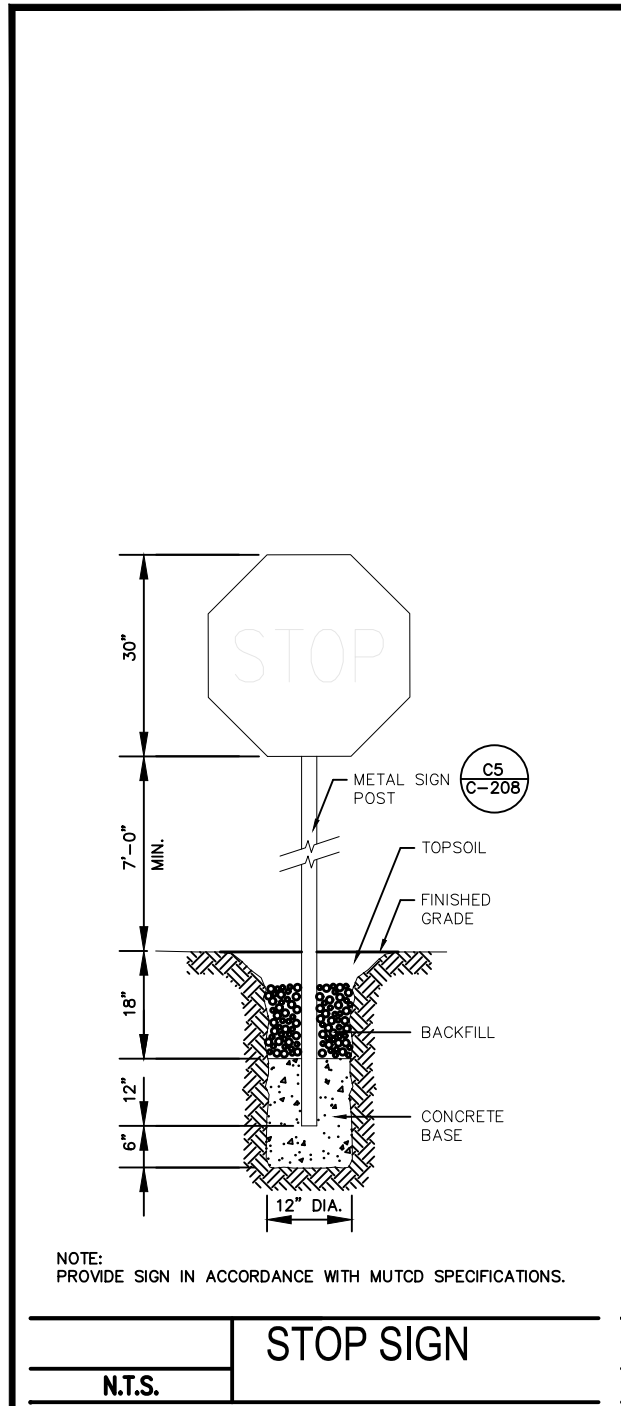




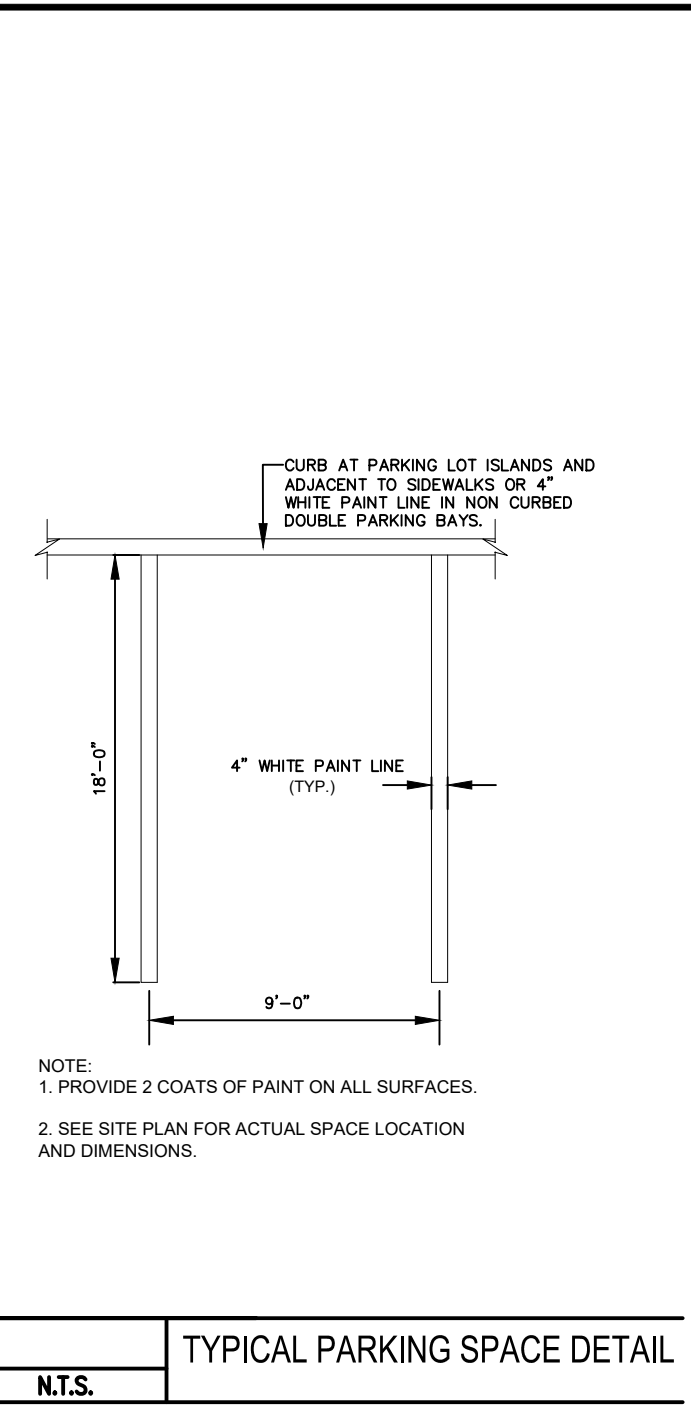




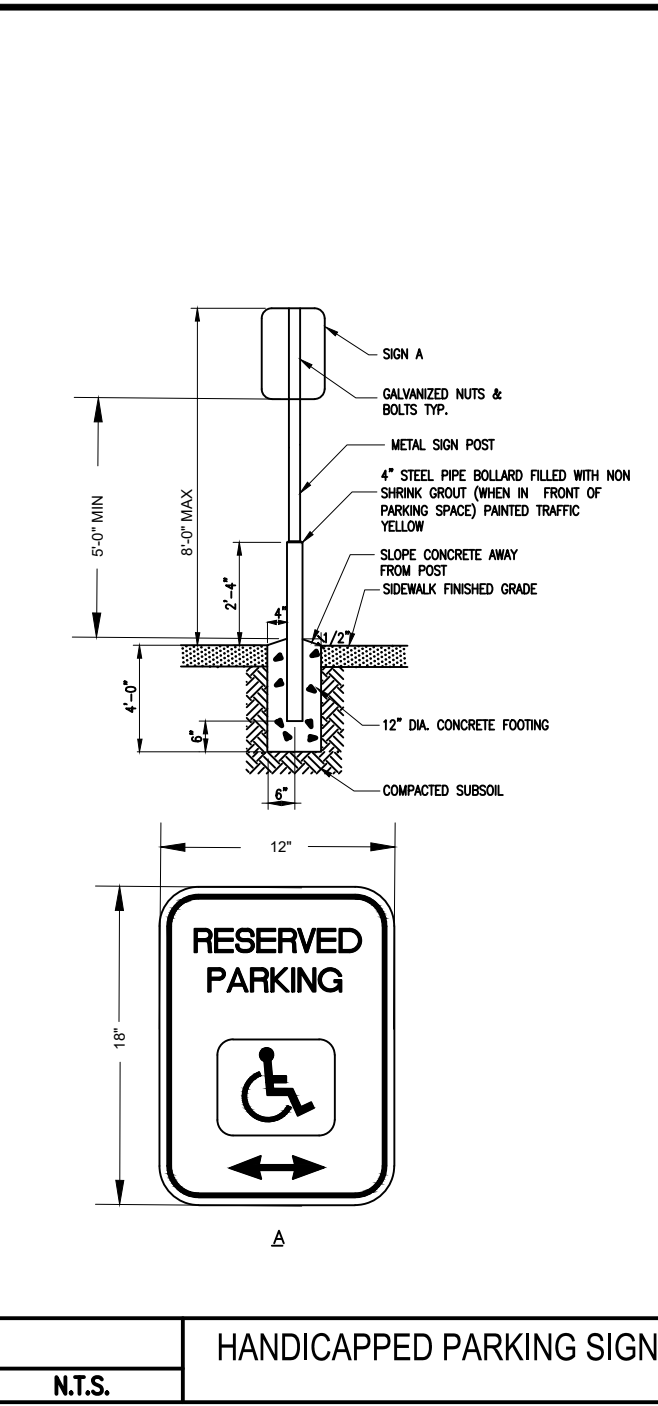




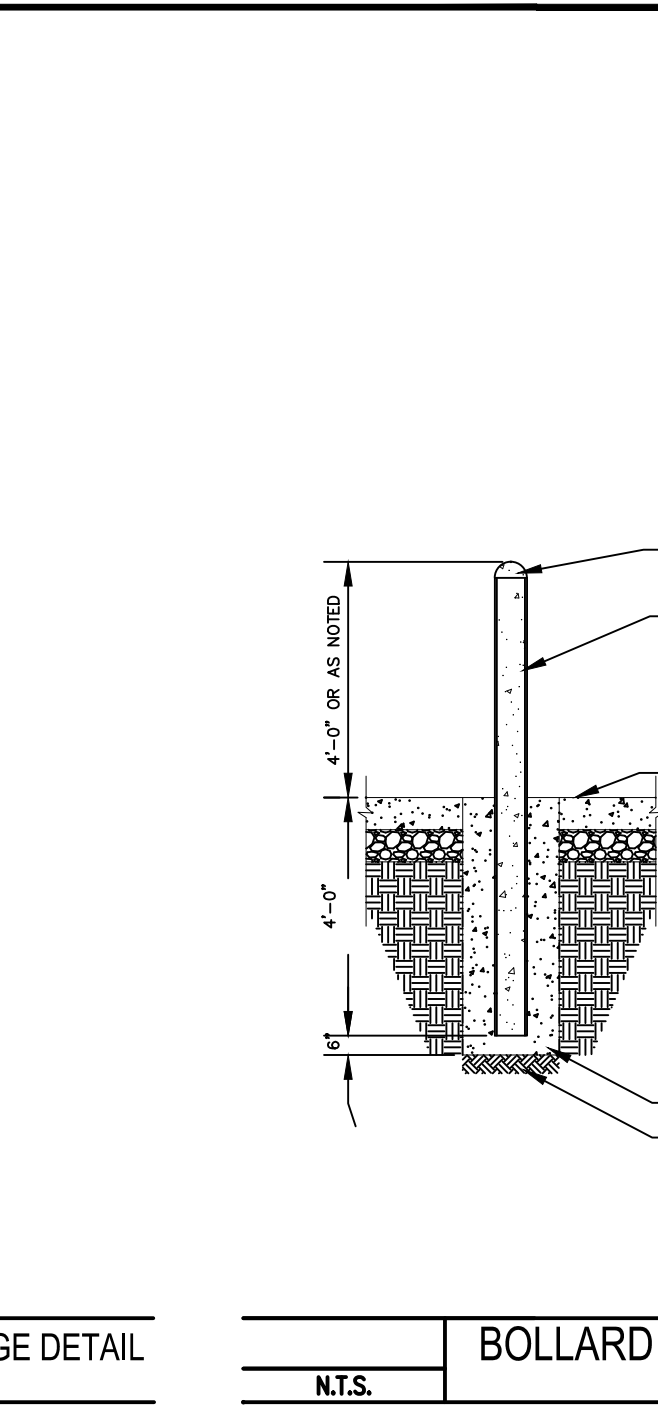
**STOP SIGN**  
N.T.S.



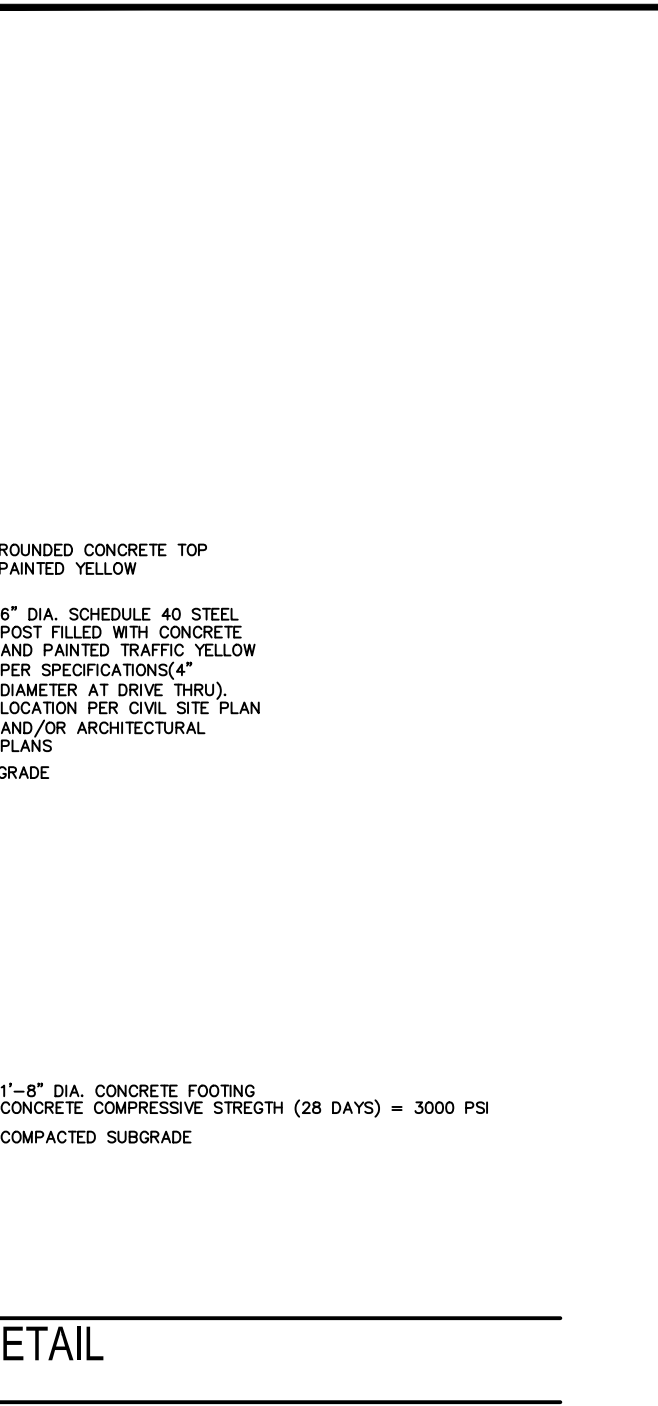
**TYPICAL PARKING SPACE DETAIL**  
N.T.S.



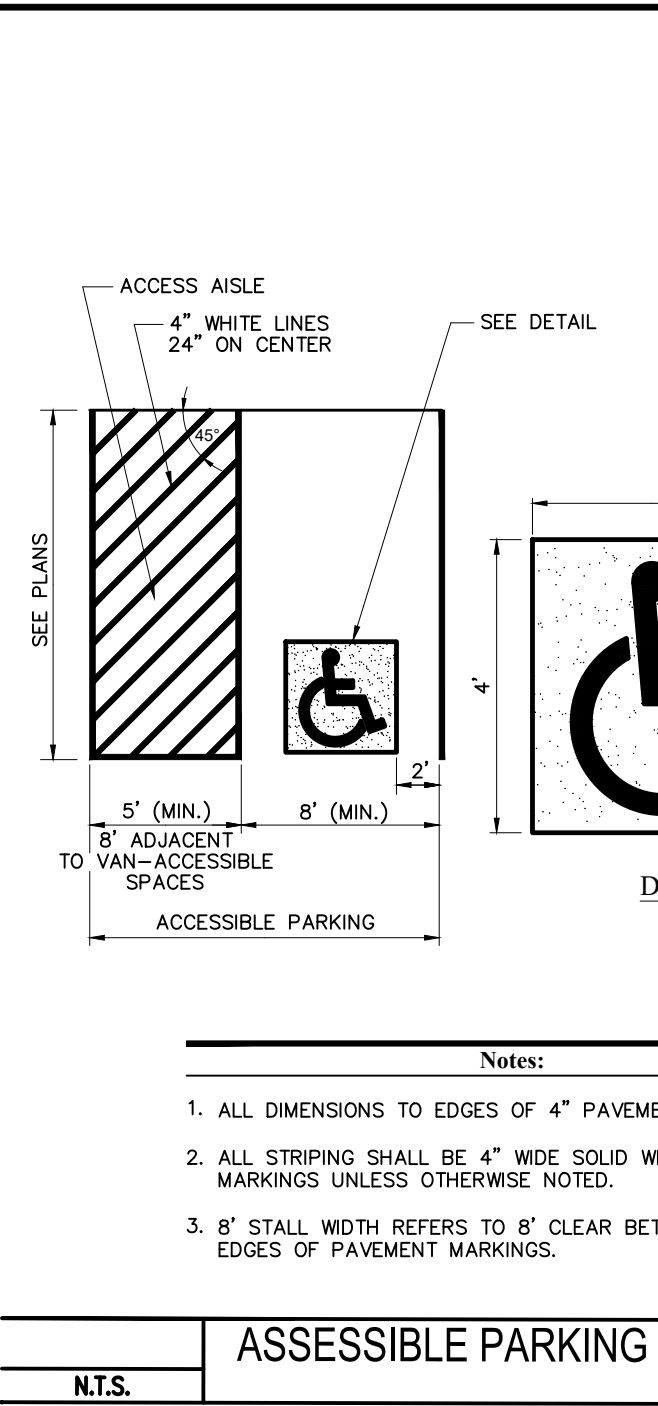
**HANDICAPPED PARKING SIGNAGE DETAIL**  
N.T.S.



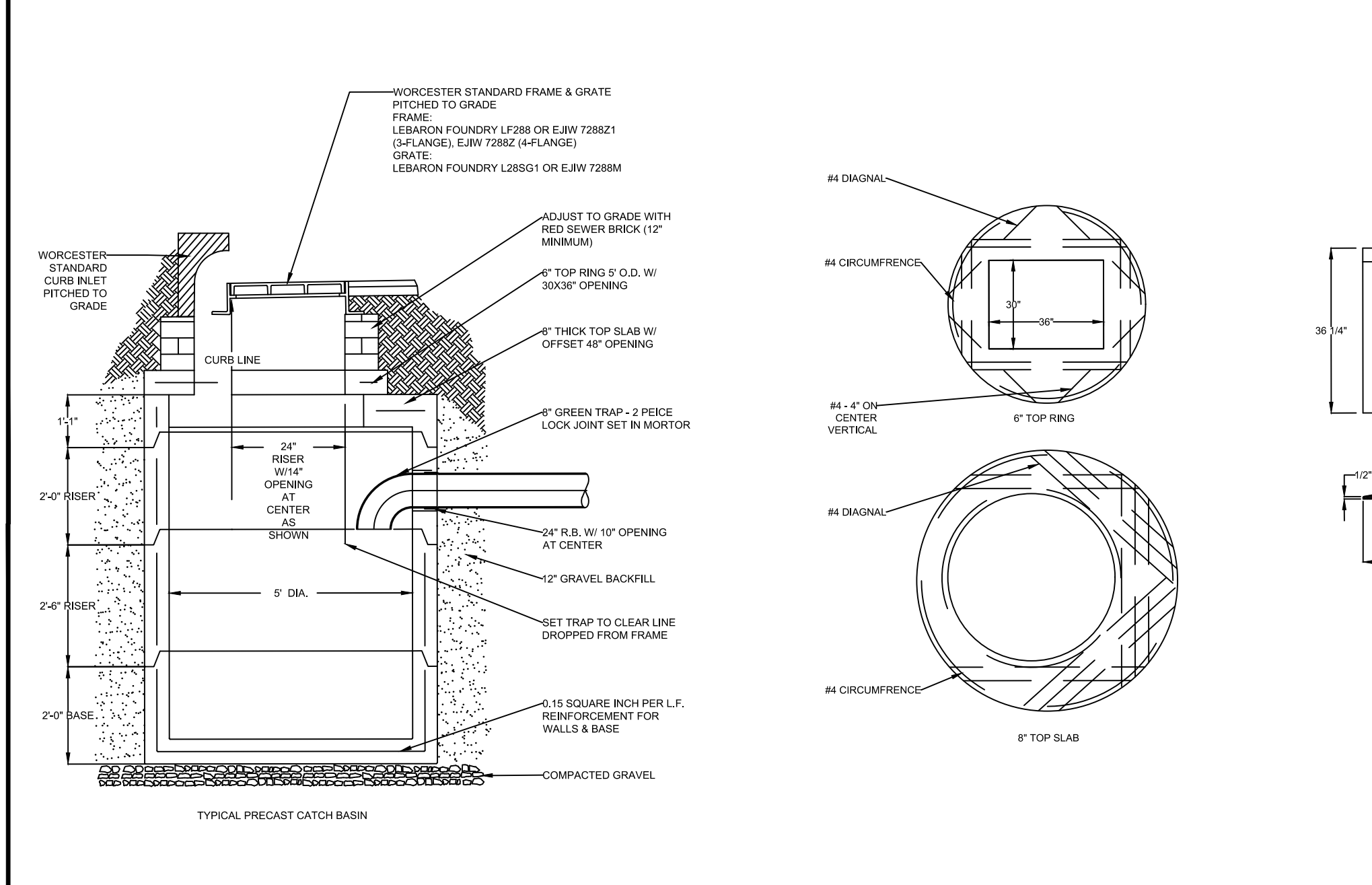
**BOLLARD DETAIL**  
N.T.S.



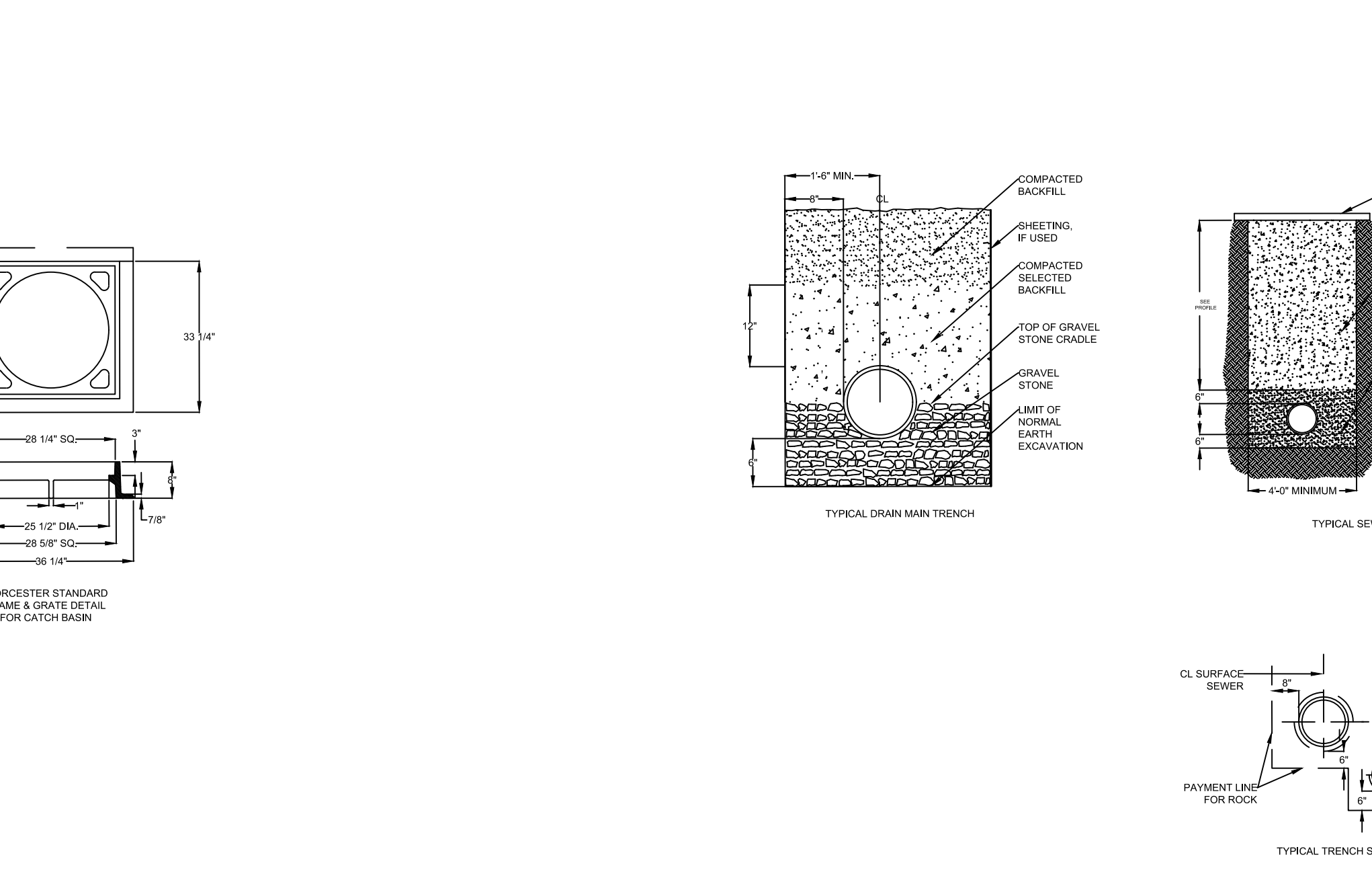
**ASSESSIBLE PARKING SPACE DETAIL**  
N.T.S.



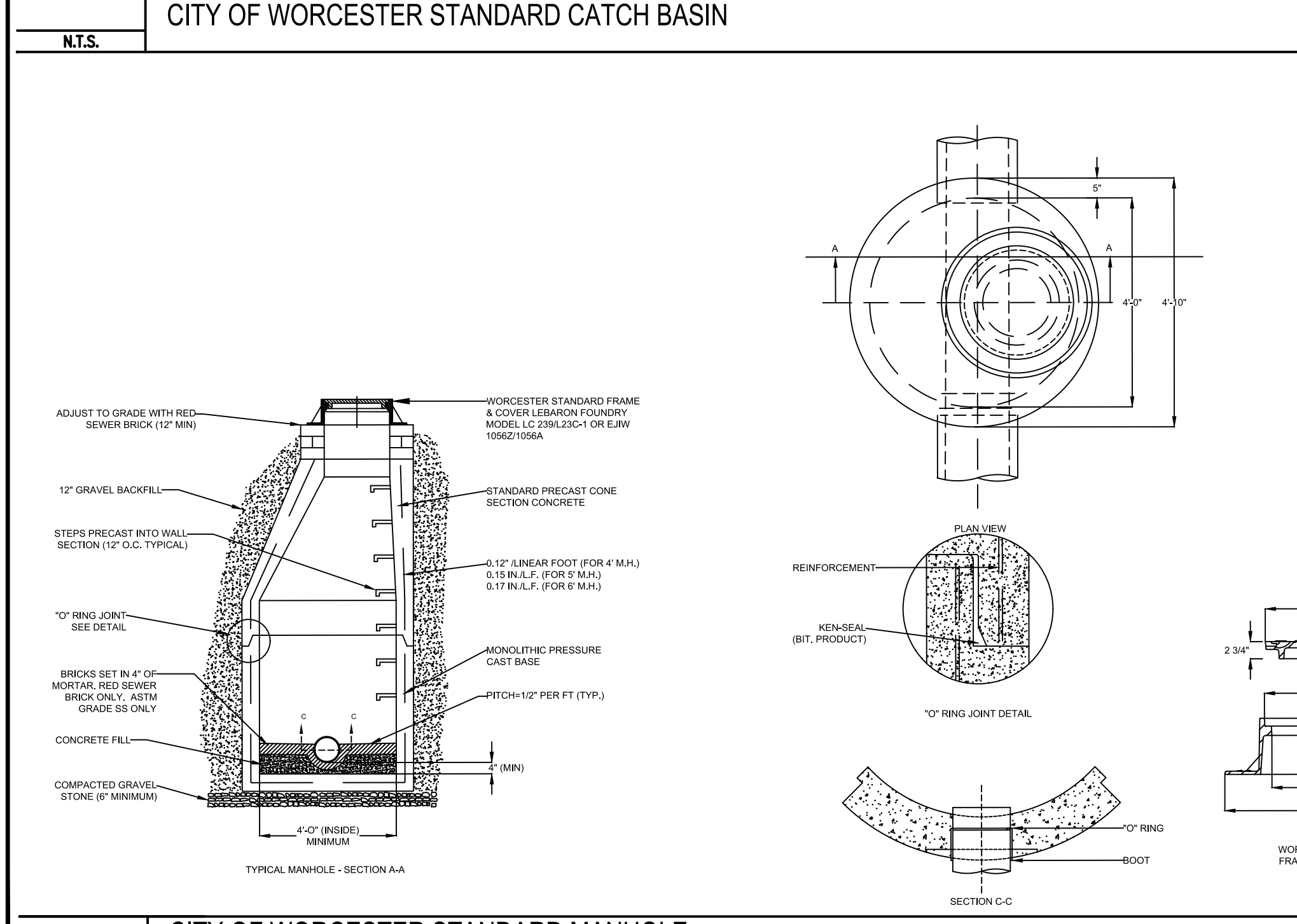
**TYPICAL CONDUIT BANK**  
N.T.S.



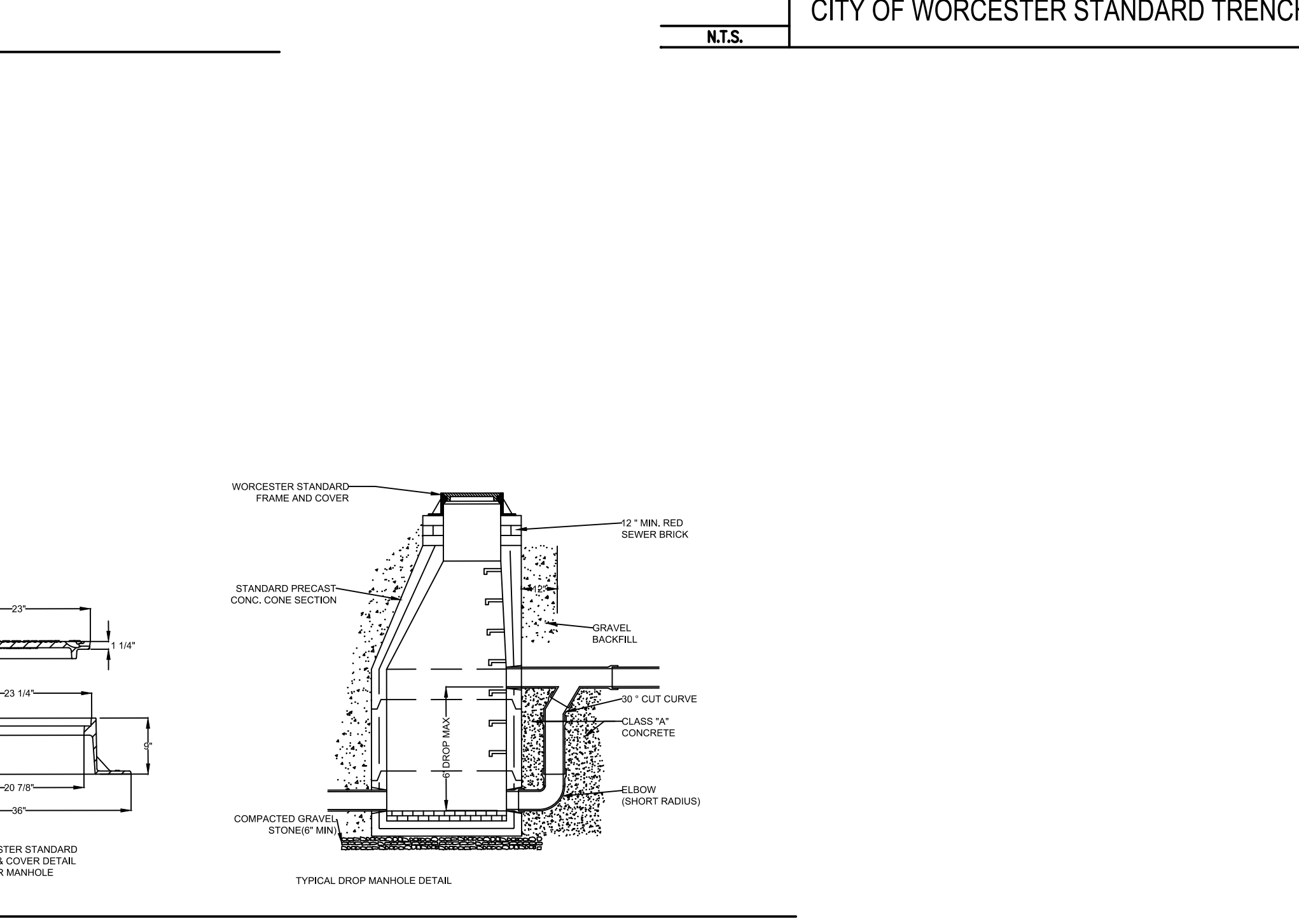
**CITY OF WORCESTER STANDARD CATCH BASIN**  
N.T.S.



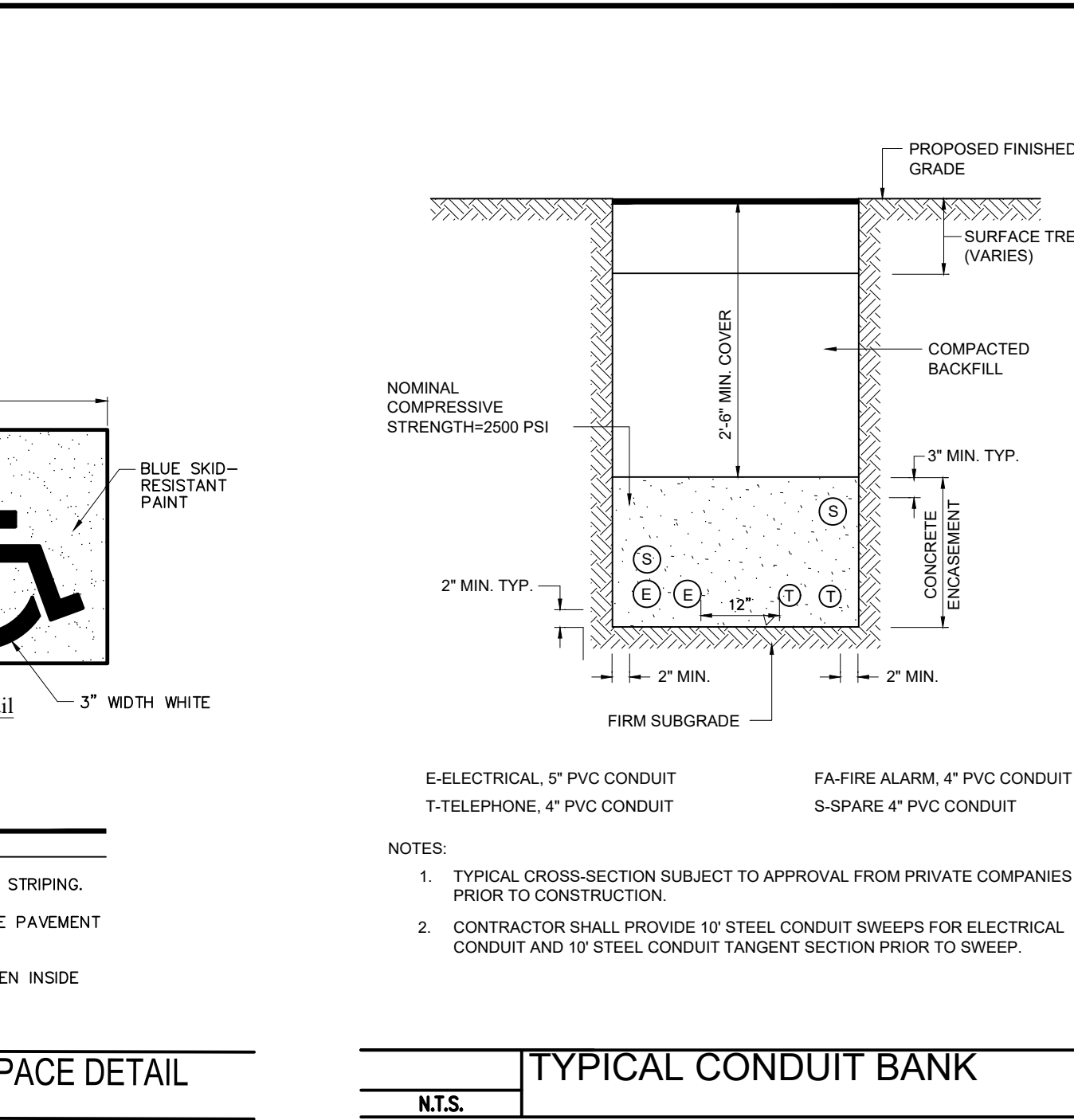
**CITY OF WORCESTER STANDARD TRENCH DETAILS**  
N.T.S.



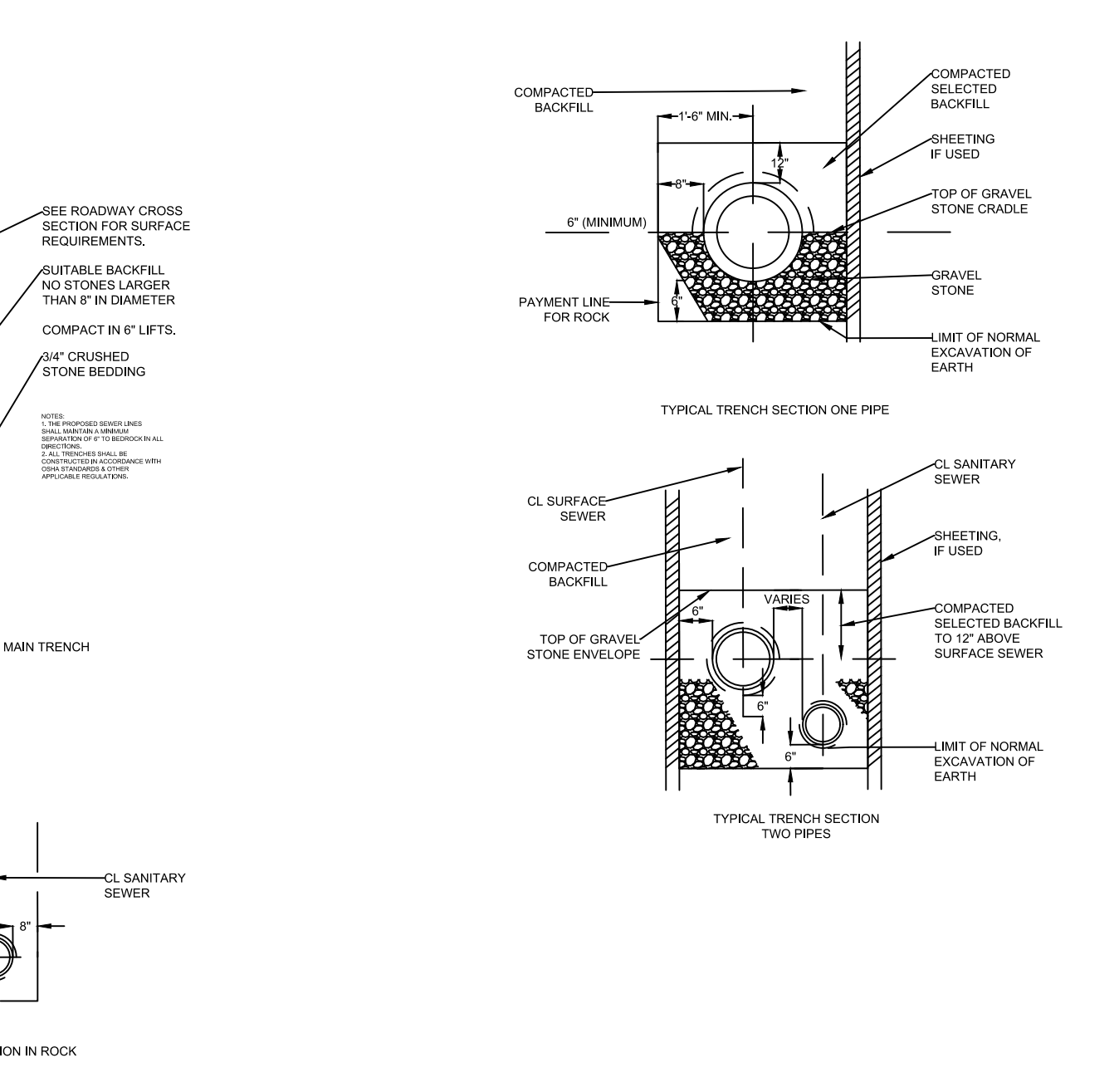
**CITY OF WORCESTER STANDARD MANHOLE**  
N.T.S.



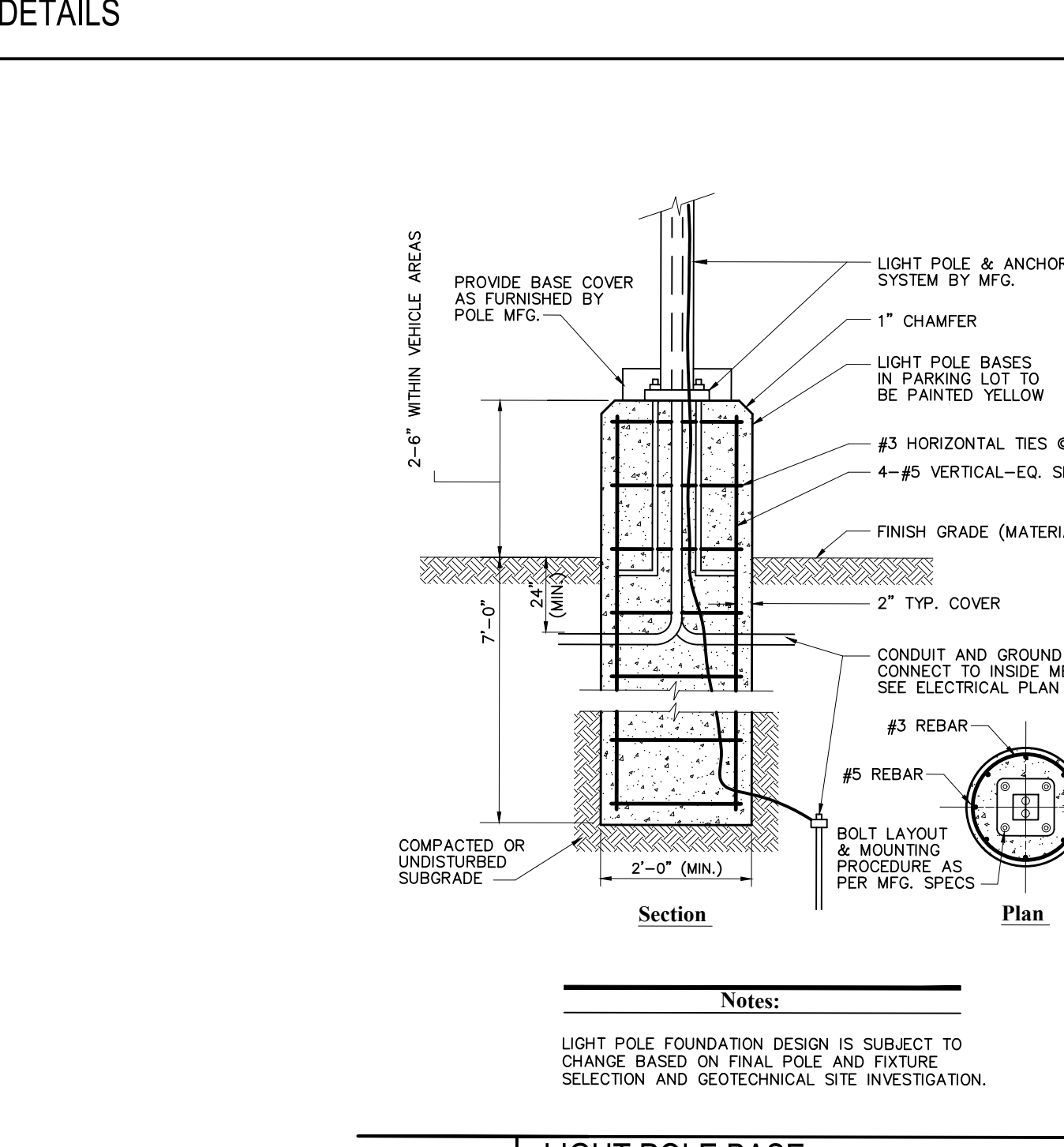
**TYPICAL DROP MANHOLE DETAIL**  
N.T.S.



**LIGHT POLE BASE**  
N.T.S.



**TYPICAL TRENCH SECTION ONE PIPE**  
**TYPICAL TRENCH SECTION TWO PIPES**  
N.T.S.



**CITY OF WORCESTER STANDARD MANHOLE**  
N.T.S.

Prepared By:  
**MIDPOINT**  
ENGINEERING • CONSULTING  
37 Sutton Road  
Webster, MA 01570  
(508) 721-1900  
pdoherty@midpointengineering.com

Site Location

Prepared For:  
**LACY TOPAZ, LLC**  
37 SUTTON ROAD  
WEBSTER, MA 01570  
(508) 721-0005

Date: **Jan. 30, 2024** Scale: **1" = 20'**

No.	Revision	Date
1	REVIEW COMMENTS	2/28/24

Project Title:  
**PROPOSED COMMERCIAL REDEVELOPMENT**  
79 PULLMAN ST  
Worcester, MA

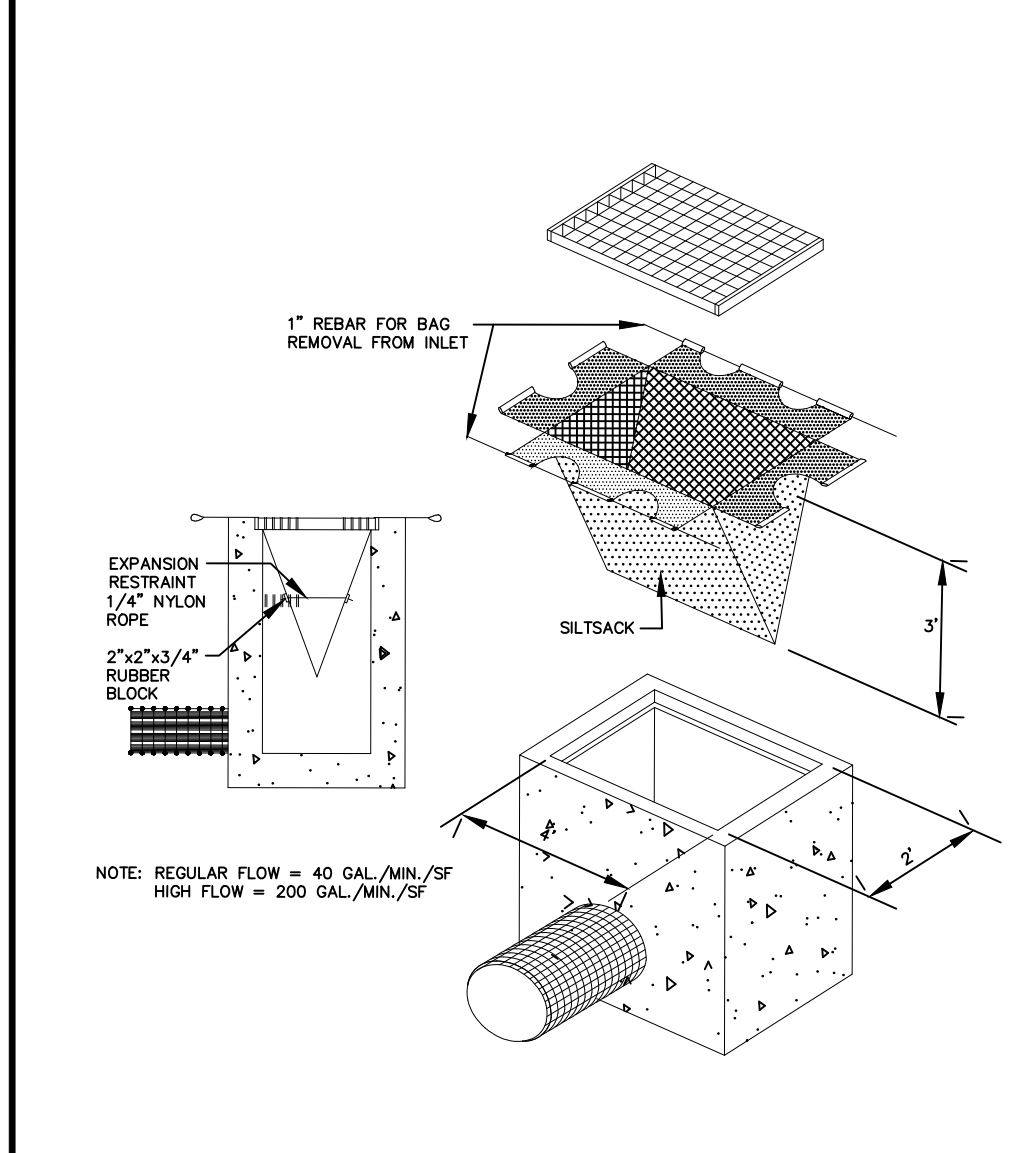
Issued For:  
**Permit**

**Not for Construction**

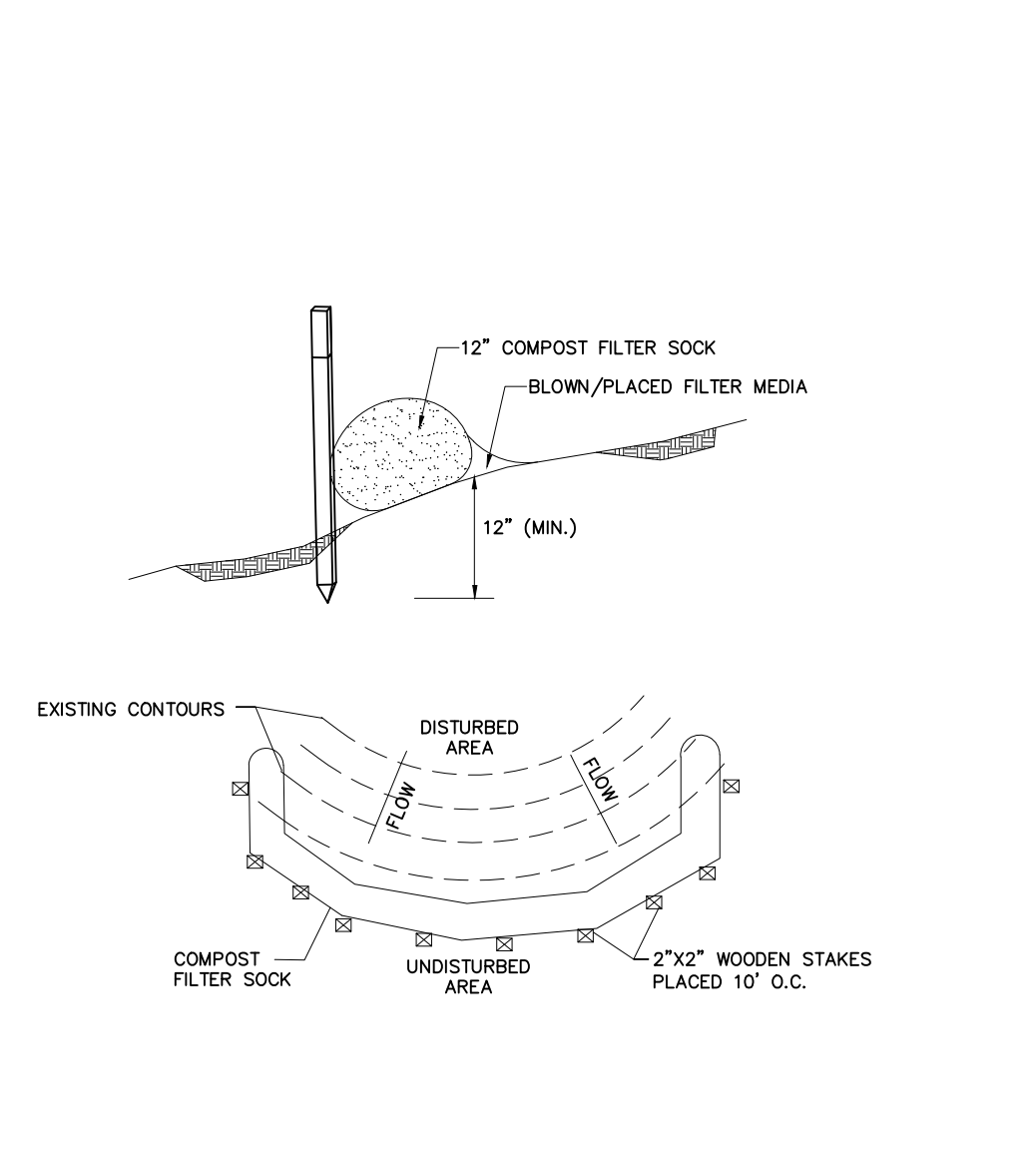
Drawing Title:  
**Site Details 1**

Drawing No.:  
**C-5**

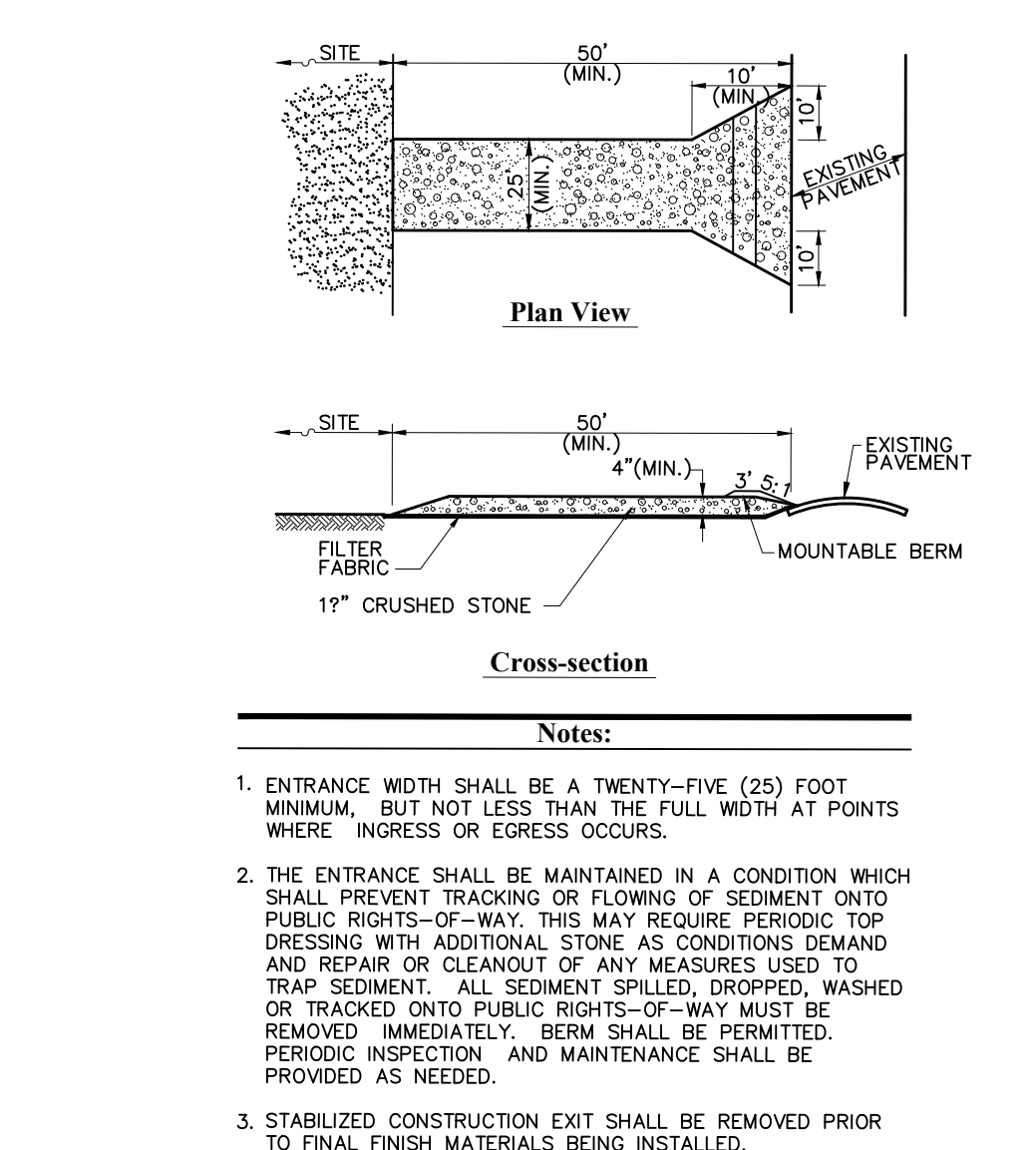




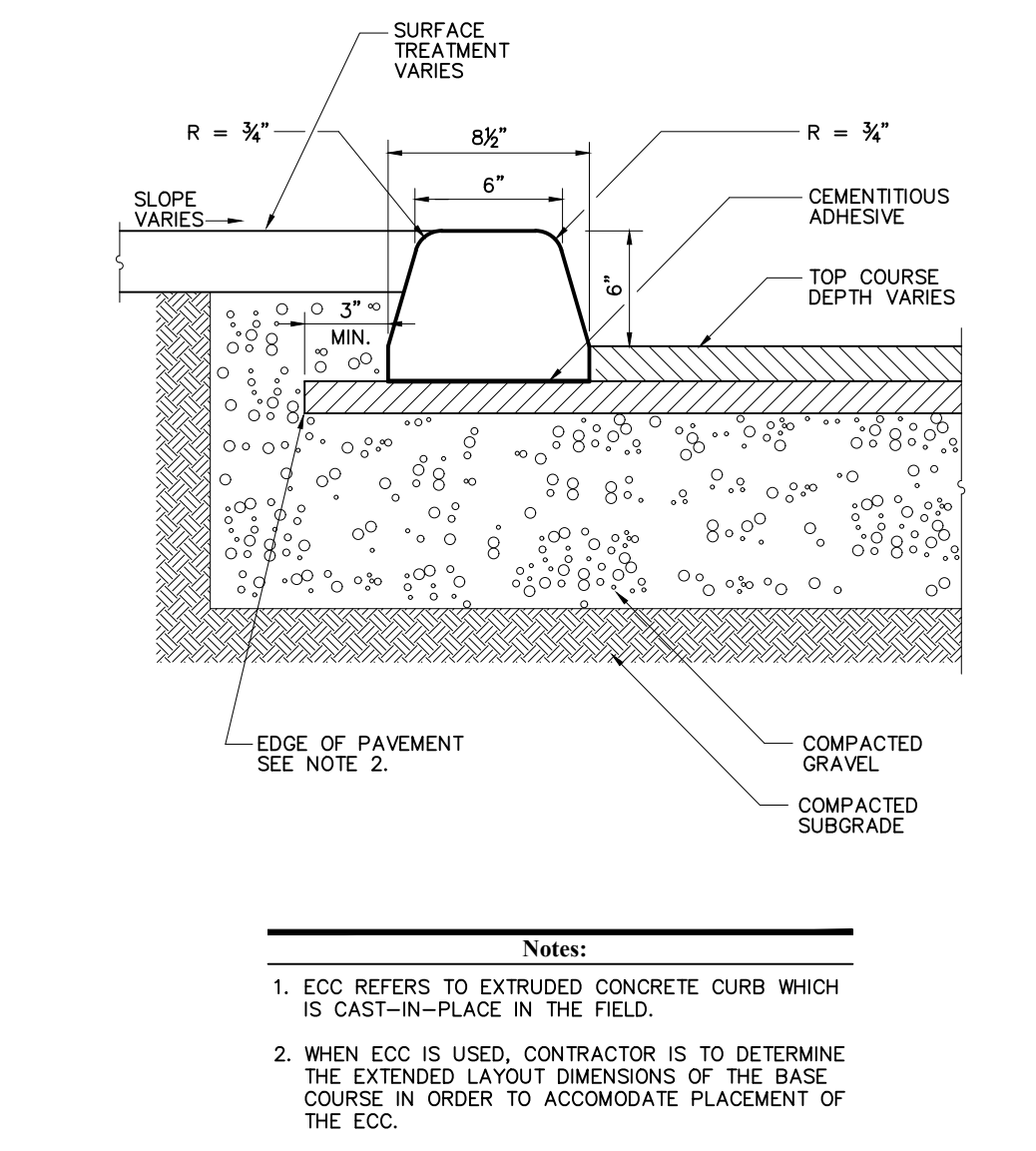
**J12** CATCHBASIN SEDIMENT TRAP  
 N.T.S.



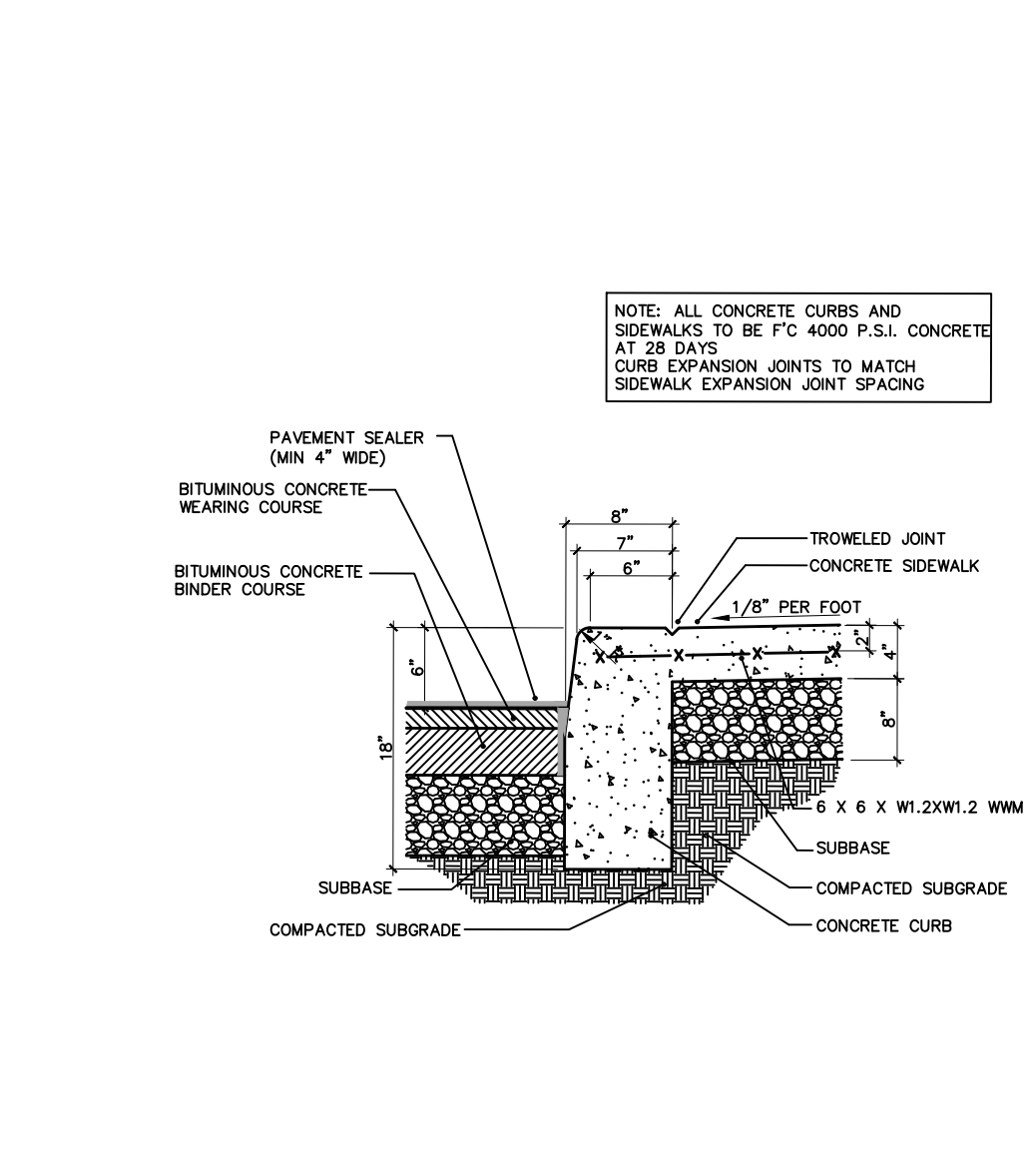
**N.T.S.** COMPOST FILTER SOCK



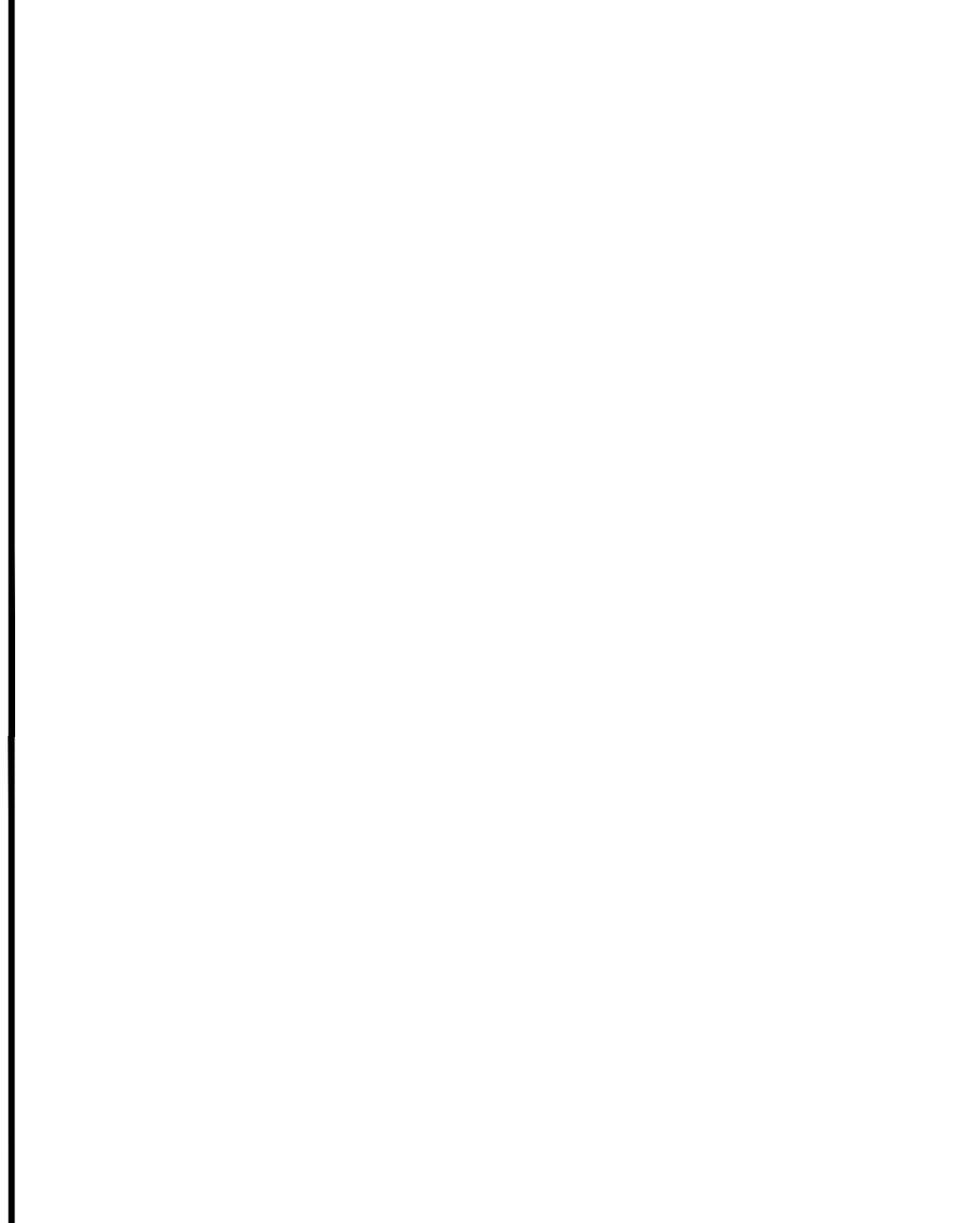
**A12** STABILIZED CONSTRUCTION ENTRANCE  
 N.T.S.



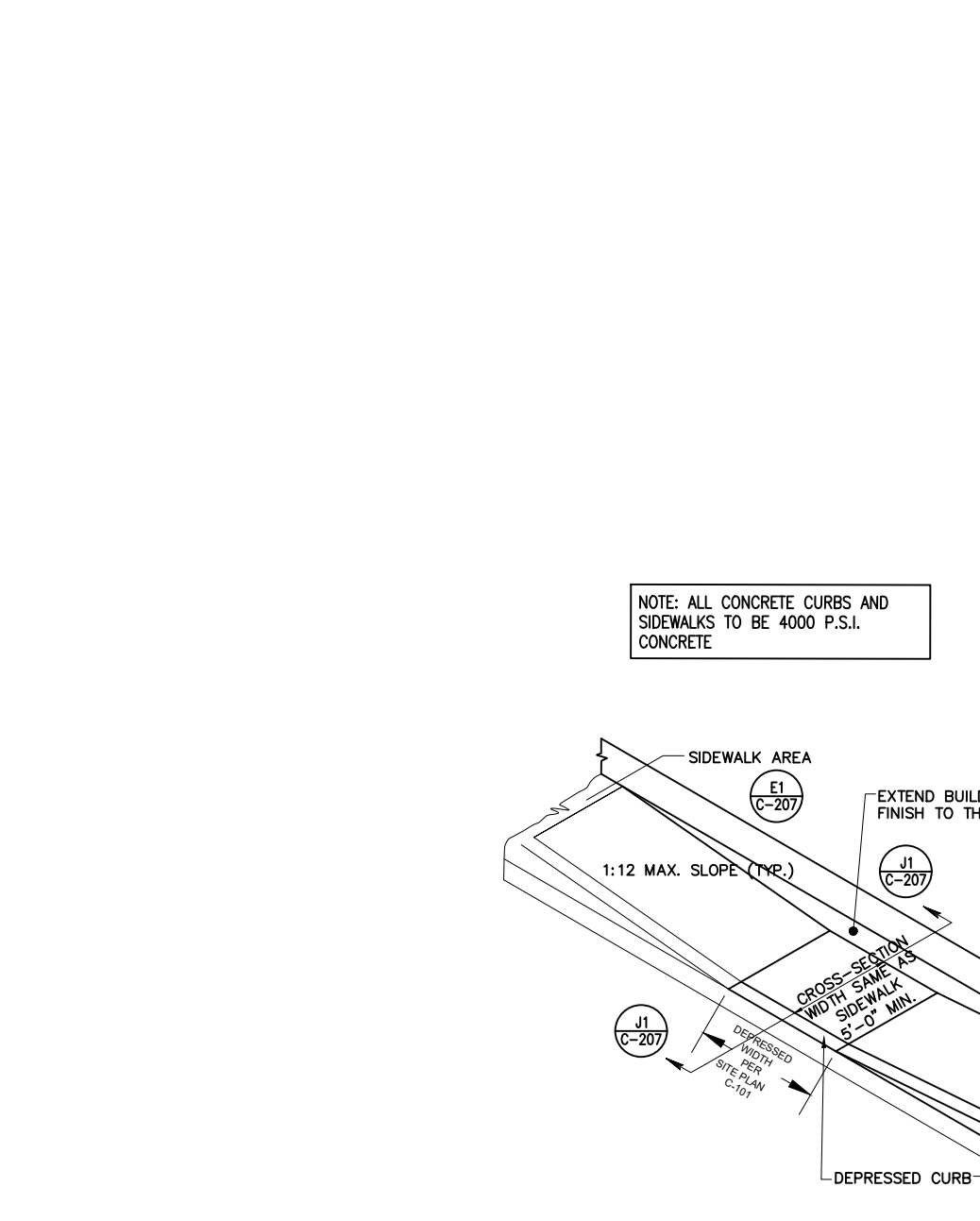
**N.T.S.** EXTRUDED CONCRETE CURB (ECC)



**N.T.S.** CURB DETAIL WITH MONOLITHIC SIDEWALK ONSITE



**N.T.S.** CURB RAMP DETAIL AND RAMP SCHEDULE



**N.T.S.** CURB RAMP DETAIL

**CURB RAMP DIMENSIONS NEW CONSTRUCTION**

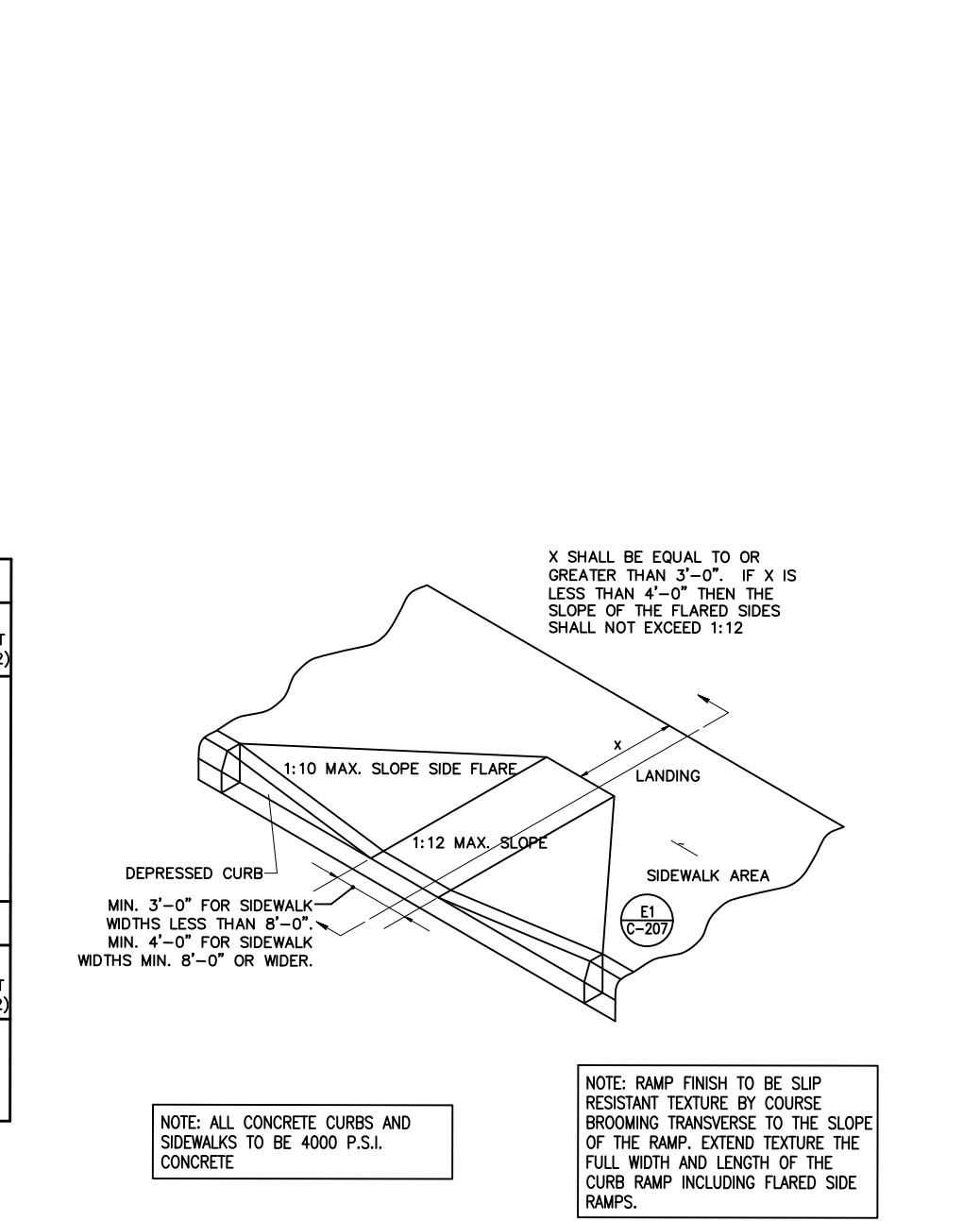
RISE OF RAMP	MAX. RAMP SLOPE	NOMINAL RAMP LENGTH (1:12)	SIDE FLARE DIMENSION AT CURB (1:10)	SIDE FLARE DIMENSION AT CURB (1:12)
3"	1:12	3.0 FT.	2.5 FT.	3.0 FT.
4"	1:12	4.0 FT.	3.3 FT.	4.0 FT.
5"	1:12	5.0 FT.	4.2 FT.	5.0 FT.
6"	1:12	6.0 FT.	5.0 FT.	6.0 FT.
7"	1:12	7.0 FT.	5.8 FT.	7.0 FT.
8"	1:12	8.0 FT.	6.7 FT.	8.0 FT.
9"	1:12	9.0 FT.	7.5 FT.	9.0 FT.
10"	1:12	10.0 FT.	8.4 FT.	10.0 FT.
11"	1:12	11.0 FT.	9.2 FT.	11.0 FT.
12"	1:12	12.0 FT.	10.0 FT.	12.0 FT.

**CURB RAMP DIMENSIONS EXISTING CONDITION \***

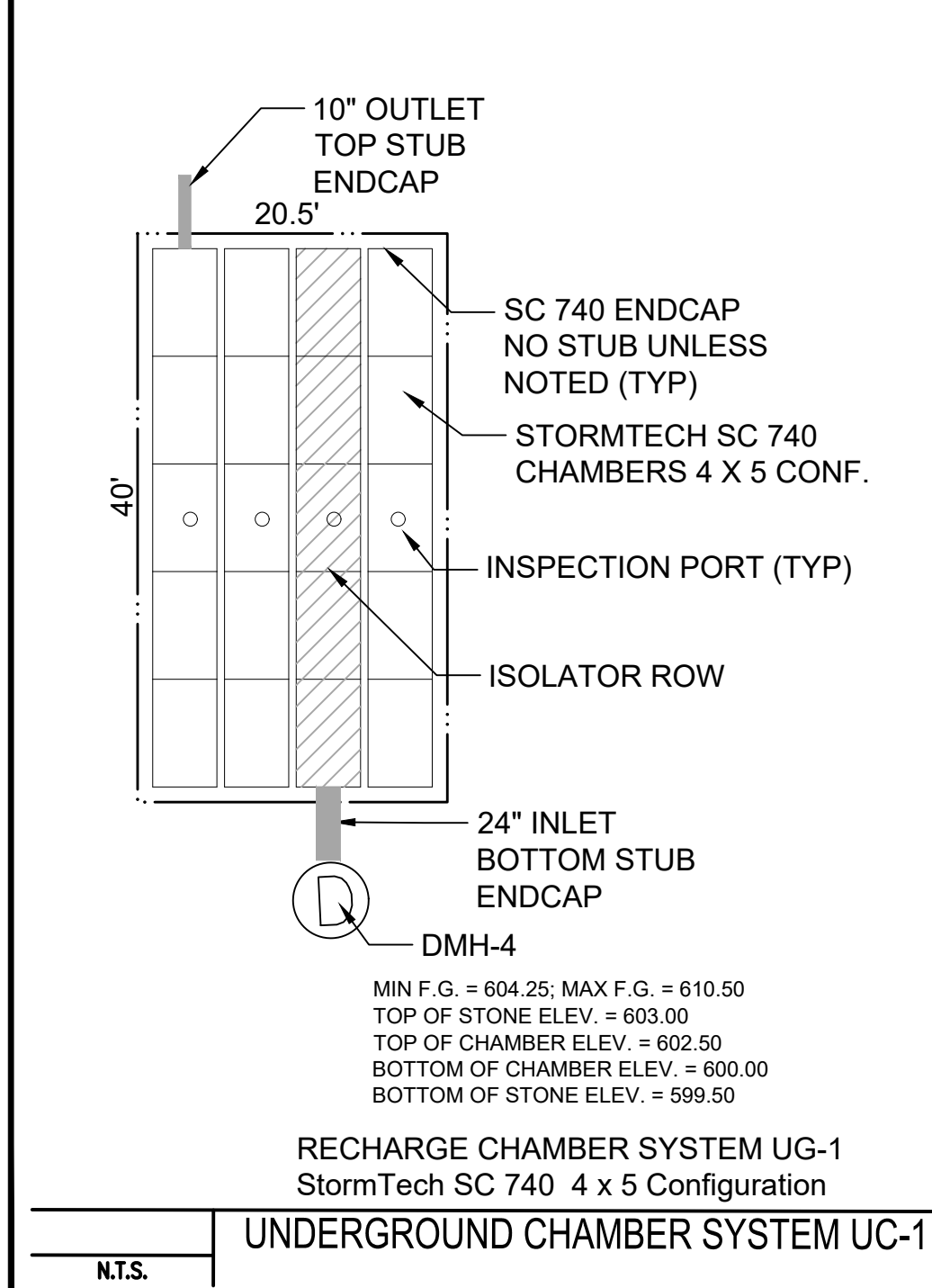
MAX. RAMP SLOPE	MAX. RAMP OF RAMP	NOMINAL RAMP LENGTH	SIDE FLARE DIMENSION AT CURB (1:10)	SIDE FLARE DIMENSION AT CURB (1:12)
3"	1:8	2.0 FT.	2.5 FT.	3.0 FT.
4"	1:10	3.3 FT.	3.3 FT.	4.0 FT.
5"	1:10	4.2 FT.	4.2 FT.	5.0 FT.
6"	1:10	5.0 FT.	5.0 FT.	6.0 FT.

\* USE ONLY WHEN SPACE LIMITATIONS PROHIBIT THE CONSTRUCTION OF 1:12 OR FLATTER SLOPES.  
 \* CURB HEIGHT PLUS RISE OF SIDEWALK CROSS SLOPE.

**N.T.S.** CURB RAMP DETAIL



**N.T.S.** FULL DEPTH PAVEMENT REPAIR



**N.T.S.** RECHARGE CHAMBER SYSTEM UG-1 StormTech SC 740 4 x 5 Configuration UNDERGROUND CHAMBER SYSTEM UC-1

**NOMINAL CHAMBER SPECIFICATIONS**

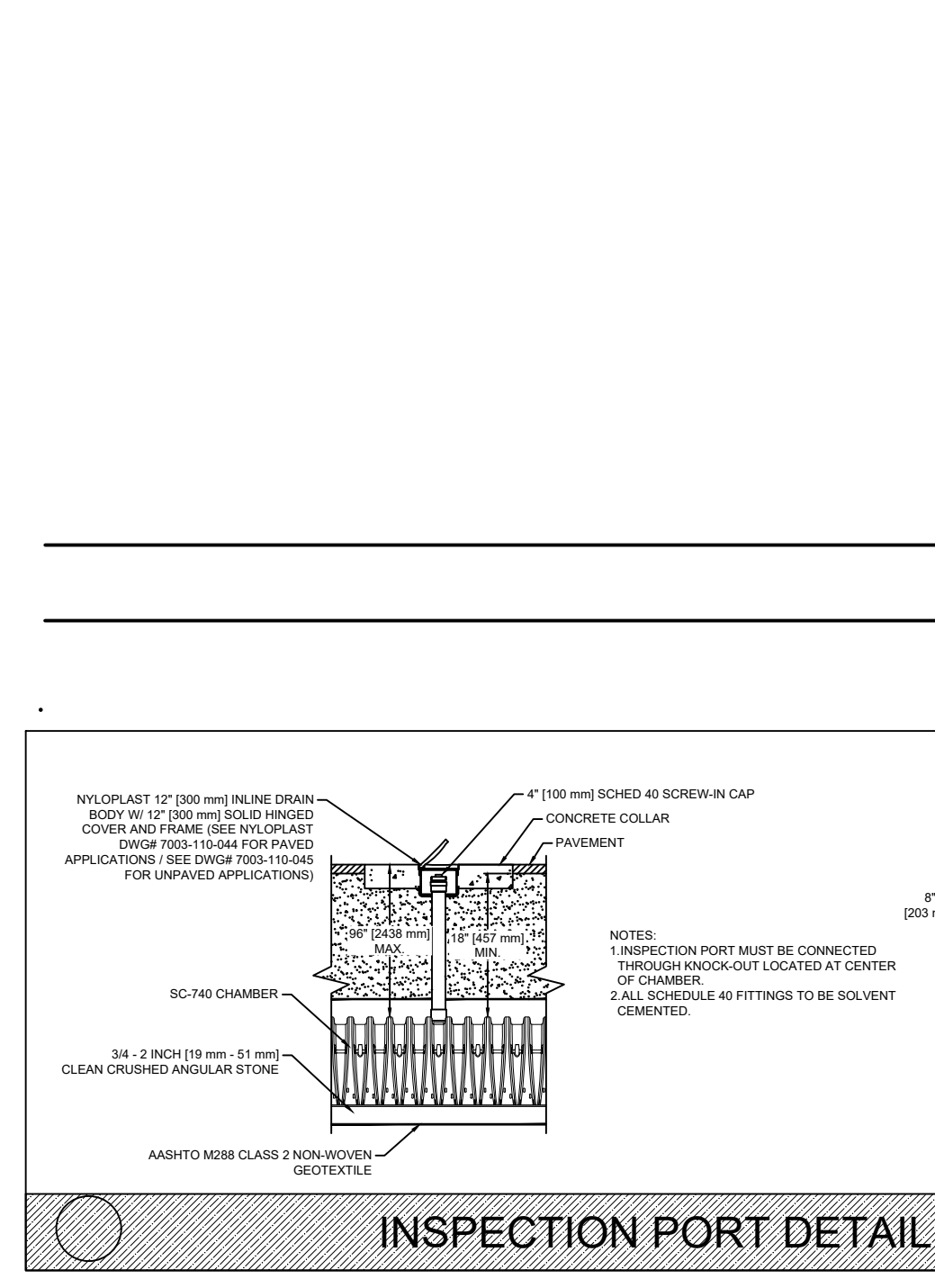
SIZE (W x H x INSTALLED LENGTH)	CHAMBER STORAGE	MINIMUM INSTALLED STORAGE WEIGHT
51.0" x 30.0" x 85.4" [1295 mm x 762 mm x 2169 mm]	45.9 CUBIC FEET [1.30 m <sup>3</sup> ]	74.9 CUBIC FEET [2.12 m <sup>3</sup> ]
		75 lbs. [33.6 kg]

**STUBS AT BOTTOM OF END CAP FOR PART NUMBERS ENDING WITH "B"**  
**STUBS AT TOP OF END CAP FOR PART NUMBERS ENDING WITH "T"**

PART#	STUB	A	B	C
SC740EP06BT	6" (150 mm)	10.90" (277 mm)	18.50" (470 mm)	N/A
SC740EP06BT	6" (150 mm)	10.90" (277 mm)	N/A	0.50" (13 mm)
SC740EP08BT	8" (200 mm)	12.20" (310 mm)	16.50" (419 mm)	N/A
SC740EP08BT	8" (200 mm)	12.20" (310 mm)	N/A	0.60" (15 mm)
SC740EP10T	10" (250 mm)	13.40" (340 mm)	14.50" (368 mm)	N/A
SC740EP10B	10" (250 mm)	13.40" (340 mm)	N/A	0.70" (18 mm)
SC740EP12T	12" (300 mm)	14.70" (373 mm)	12.50" (318 mm)	N/A
SC740EP12B	12" (300 mm)	14.70" (373 mm)	N/A	1.20" (30 mm)
SC740EP15T	15" (375 mm)	18.40" (467 mm)	9.00" (229 mm)	N/A
SC740EP15B	15" (375 mm)	18.40" (467 mm)	N/A	1.30" (33 mm)
SC740EP18T	18" (450 mm)	19.70" (500 mm)	5.00" (127 mm)	N/A
SC740EP18B	18" (450 mm)	19.70" (500 mm)	N/A	1.60" (41 mm)
SC740EP24B	24" (600 mm)	18.50" (470 mm)	N/A	0.10" (3 mm)

**NOTE: ALL DIMENSIONS ARE NOMINAL.**  
 ALL STUBS EXCEPT FOR THE SC740EP24B ARE PLACED AT BOTTOM OF END CAP SUCH THAT THE OUTSIDE DIAMETER OF THE STUB IS FLUSH WITH THE BOTTOM OF THE END CAP. FOR ADDITIONAL INFORMATION CONTACT STORMTECH AT 1-888-852-2694.  
 \*FOR THE SC740EP24B THE 24" (600 mm) STUB LIES BELOW THE BOTTOM OF THE END CAP APPROXIMATELY 1.75" (44 mm). BACKFILL MATERIAL SHOULD BE REMOVED FROM BELOW THE W-12 STUB SO THAT THE FITTING SITS LEVEL.

**N.T.S.** RECHARGE CHAMBER SYSTEM UG-1 StormTech SC 740 4 x 5 Configuration UNDERGROUND CHAMBER SYSTEM UC-1



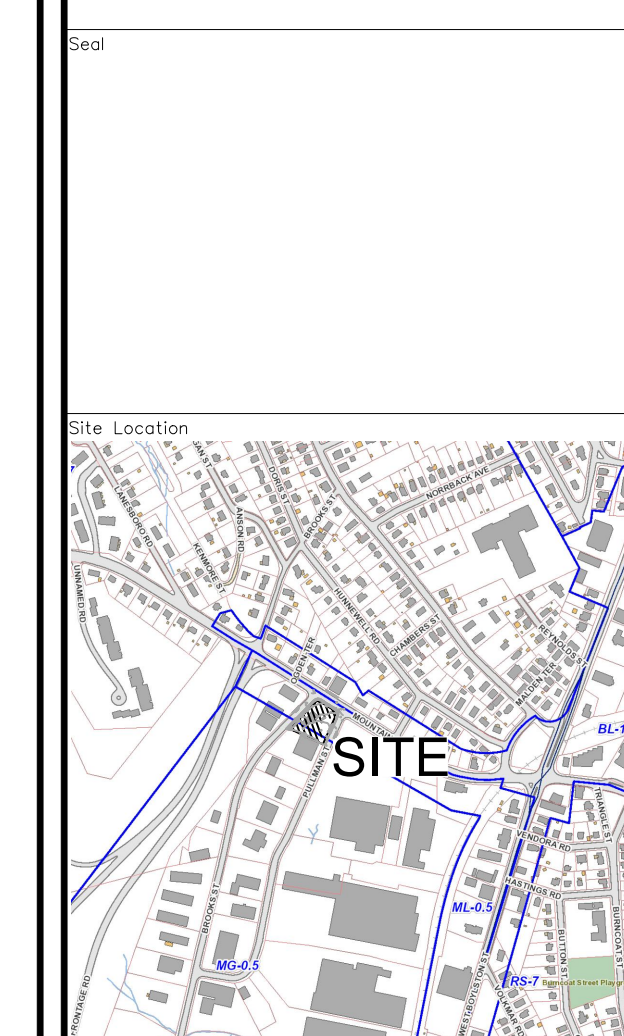
**N.T.S.** INSPECTION PORT DETAIL

**ACCEPTABLE FILL MATERIALS: STORMTECH SC-740 CHAMBER SYSTEMS**

MATERIAL LOCATION	DESCRIPTION	AASHTO M43 DESIGNATION*	COMPACTION/DENSITY REQUIREMENT
1	FILL MATERIAL COVER LAYER TO STARTS FROM THE TOP OF THE 10" LAYER TO THE BOTTOM OF FLOORED PAVEMENT OR UNPAVED FRESH GRADE ABOVE. NOTE THAT PAVEMENT SUBGRADE MAY BE PART OF THIS LAYER.	N/A	PREFER PER ENGINEER'S PLAN. PAVED INSTALLATIONS MAY HAVE STRINGENT MATERIAL AND PREPARATION REQUIREMENTS.
2	FILL MATERIAL FOR LAYER 10" STARTS FROM THE TOP OF THE SUBGRADE TO THE BOTTOM OF THE CHAMBER. NOTE THAT PAVEMENT SUBGRADE MAY BE PART OF THIS LAYER.	3.357 & 4.467, 5.16, 5.7, 6.41, 6.7, 7.4, 8.16, 8.7	BEFORE CONSTRUCTION AFTER 100 mm (4") OF MATERIAL COVER THE CHAMBER IS TO BE TRACKED, COMPACTED, AND PLACED IN ONE LAYER. PROCTOR DENSITY ROLLER GROSS WEIGHT SHOULD NOT EXCEED 2000 lbs (900 kg).
3	EMBEDMENT TIECE SURROUNDING THE CHAMBER FROM THE PROTECTOR STONE (EXCEPT FOR THE 10" LAYER ABOVE).	3.357 & 4.467, 5.16, 5.7	NO COMPACTION REQUIRED.
4	PROTECTOR STONE BELOW CHAMBERS FROM THE SUBGRADE UP TO THE FOOT (BOTTOM) OF THE CHAMBER.	CLEAN, CRUSHED, ANGULAR STONE, NOMINAL SIZE DISTRIBUTION (ASTM D 200) IS 10-19	FLAKE OR FLAT OR RICE TO ACHIEVE 4% BULK STRENGTH PROCTOR DENSITY?

**PLEASE NOTE:**  
 1. THE LISTED AASHTO DESIGNATIONS ARE FOR GRADATIONS ONLY. THE STONE MUST ALSO BE CLEAN, CRUSHED, ANGULAR. FOR EXAMPLE, A SPECIFICATION FOR #4 STONE WOULD STATE: "CLEAN, CRUSHED, ANGULAR NO. 4 (AASHTO M43) STONE."  
 2. AS AN ALTERNATE TO PROCTOR TESTING AND FIELD DENSITY MEASUREMENTS ON OPEN GRADED STONE, STORMTECH COMPACTION REQUIREMENTS ARE MET FOR VARIATION MATERIALS WHEN PLACED AND COMPACTED IN 6" (150 mm) MAXIMUM LIFT USING TWO FULL COVERAGES WITH AN APPROPRIATE COMPACTOR.

**N.T.S.** STORMTECH ACCEPTABLE FILL MATERIALS



Prepared For:  
**LACY TOPAZ, LLC**  
 37 SUTTON ROAD  
 WEBSTER, MA 01570  
 (508) 721-0005

Date: **Jan. 30, 2024** Scale: **1" = 20'**

No.	Revision	Date
1	REVIEW COMMENTS	2/28/24

Project Title:  
**PROPOSED COMMERCIAL REDEVELOPMENT**

79 PULLMAN ST  
 Worcester, MA

Issued For:  
**Permit**

Not for Construction

Drawing Title:  
**Site Details 2**

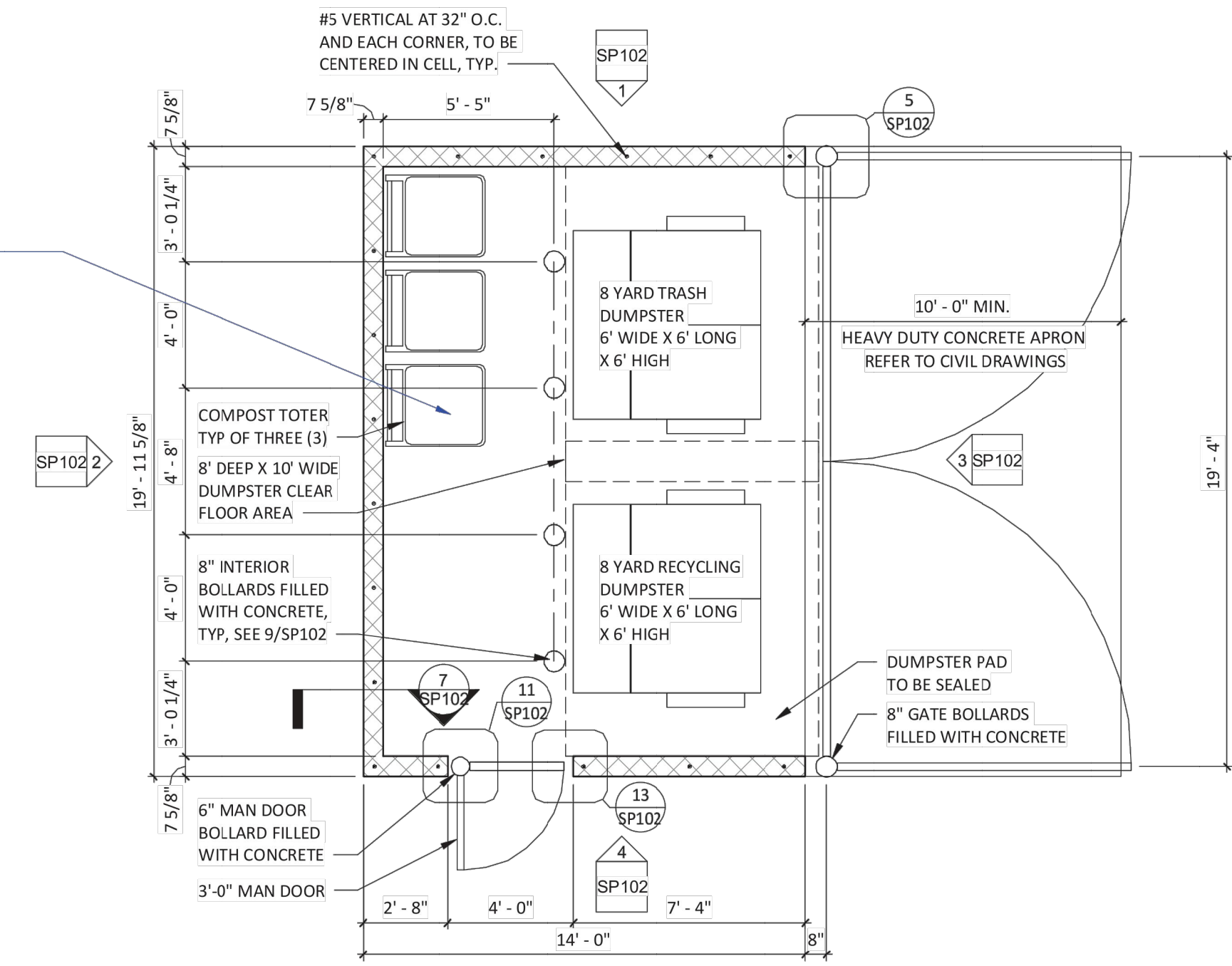


# DUMPSTER ENCLOSURE FINISH SCHEDULE

MATERIAL	COLOR/FINISH
CMU - PRIMER	REFER TO PAINT SPECIFICATIONS, COLOR 'WHITE'
CMU	REFER TO PAINT SPECIFICATIONS
METAL COPING	PREFINISHED TO MATCH PAINTED CMU
CORRUGATED METAL & DOOR FRAMES	PAINTED 'KNIGHTS ARMOR' PPG 1001-6

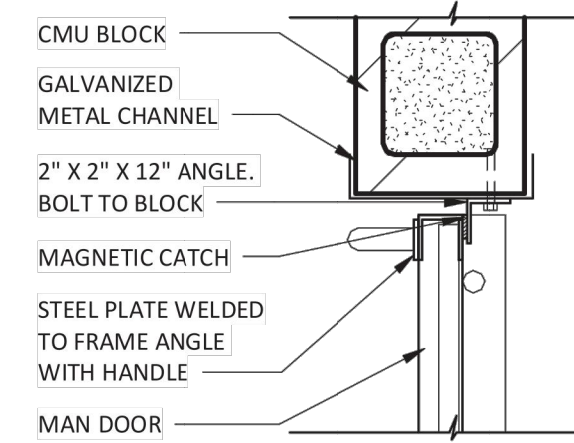
ARCHITECT TO MODIFY PER PROJECT

ARCHITECT TO CONFIRM ORIENTATION OF DUMPSTER ON PROJECT BASIS

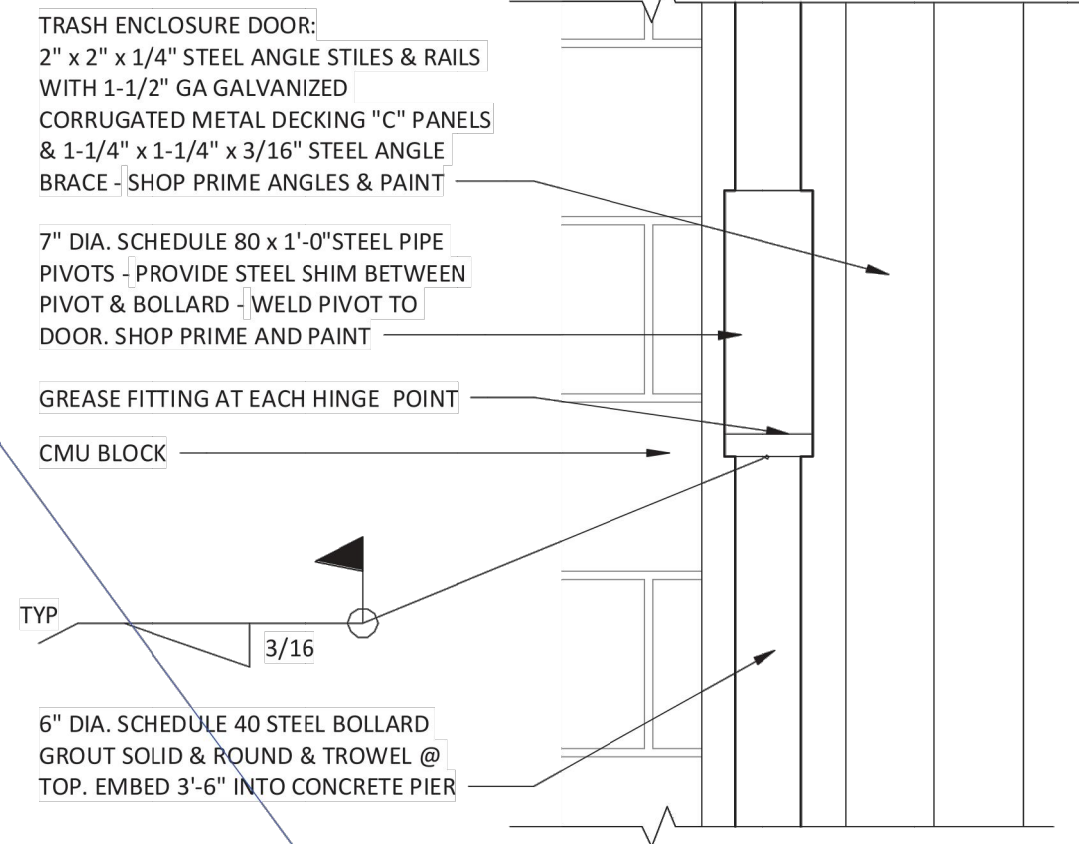


**DUMPSTER PLAN**  
1/4" = 1'-0"

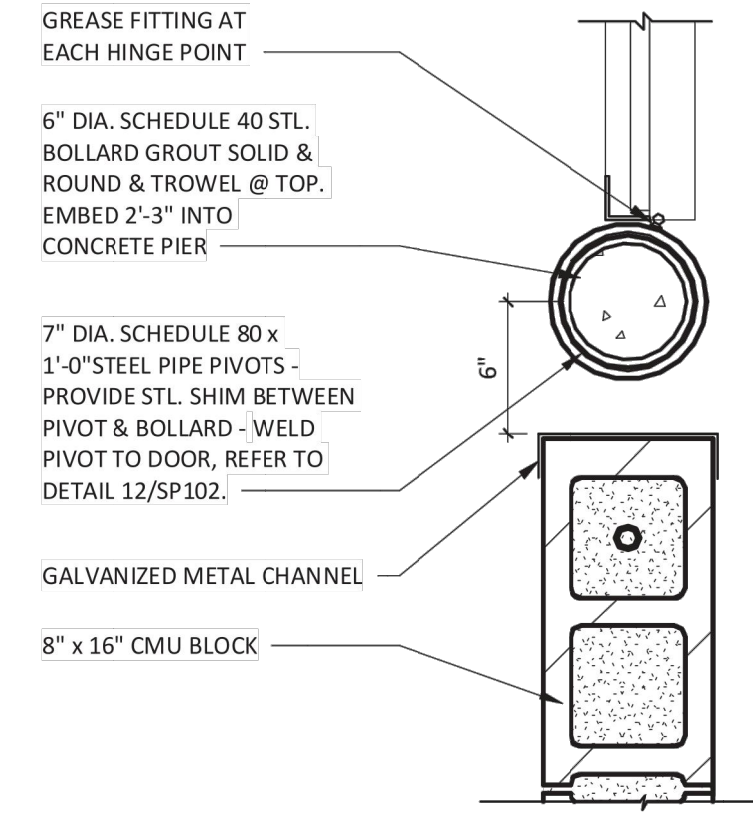
ARCHITECT TO VERIFY FOUNDATION DEPTH MEETS LOCAL FROST DEPTH - MIN. 2'-4" DEEP FOUNDATION REQUIRED



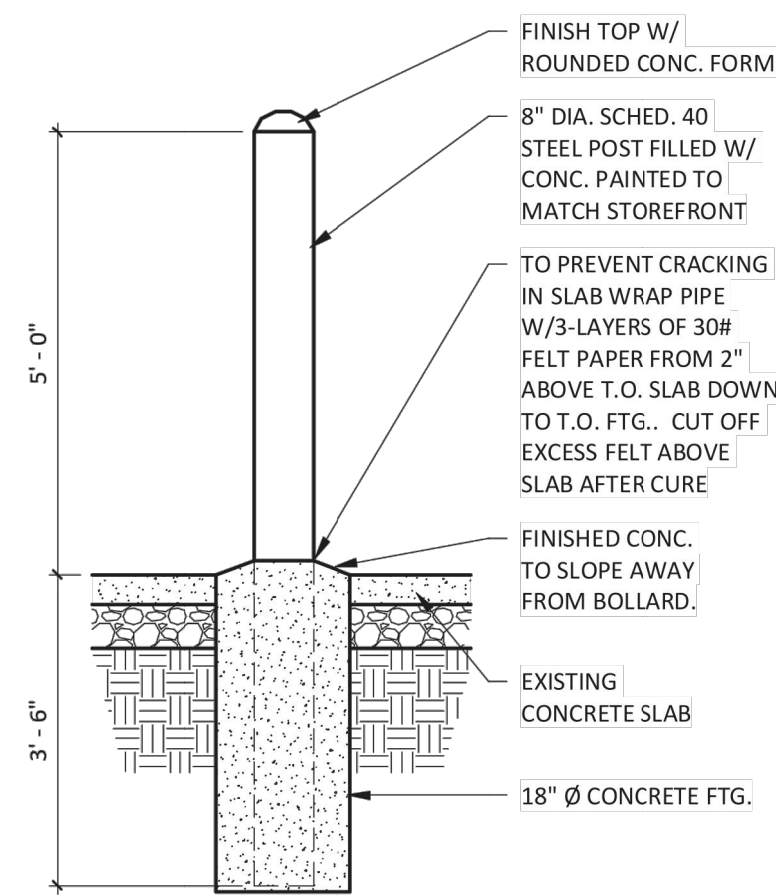
**MAN DOOR LATCH DETAIL**  
1 1/2" = 1'-0"



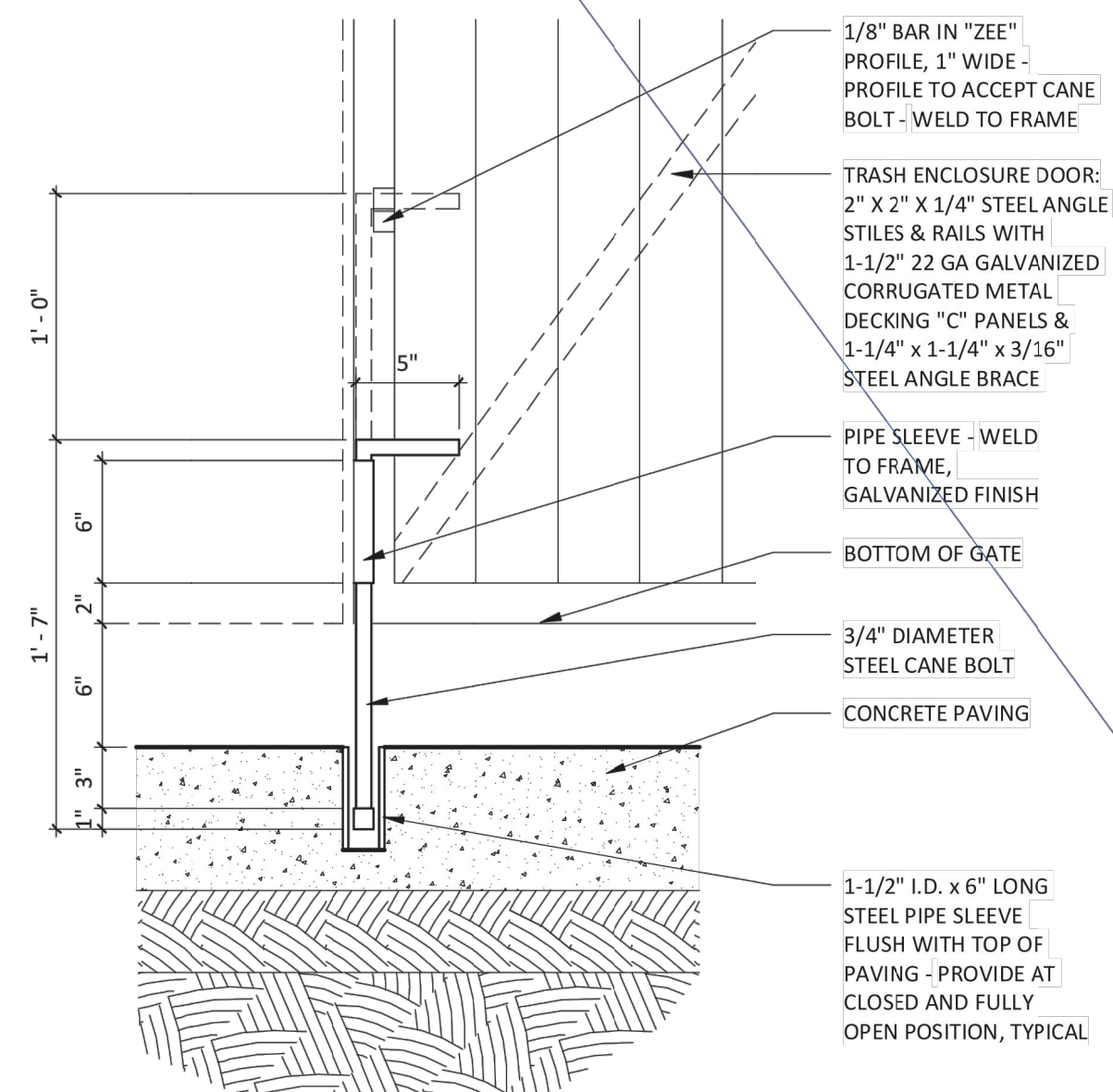
**MAN DOOR PIVOT**  
1 1/2" = 1'-0"



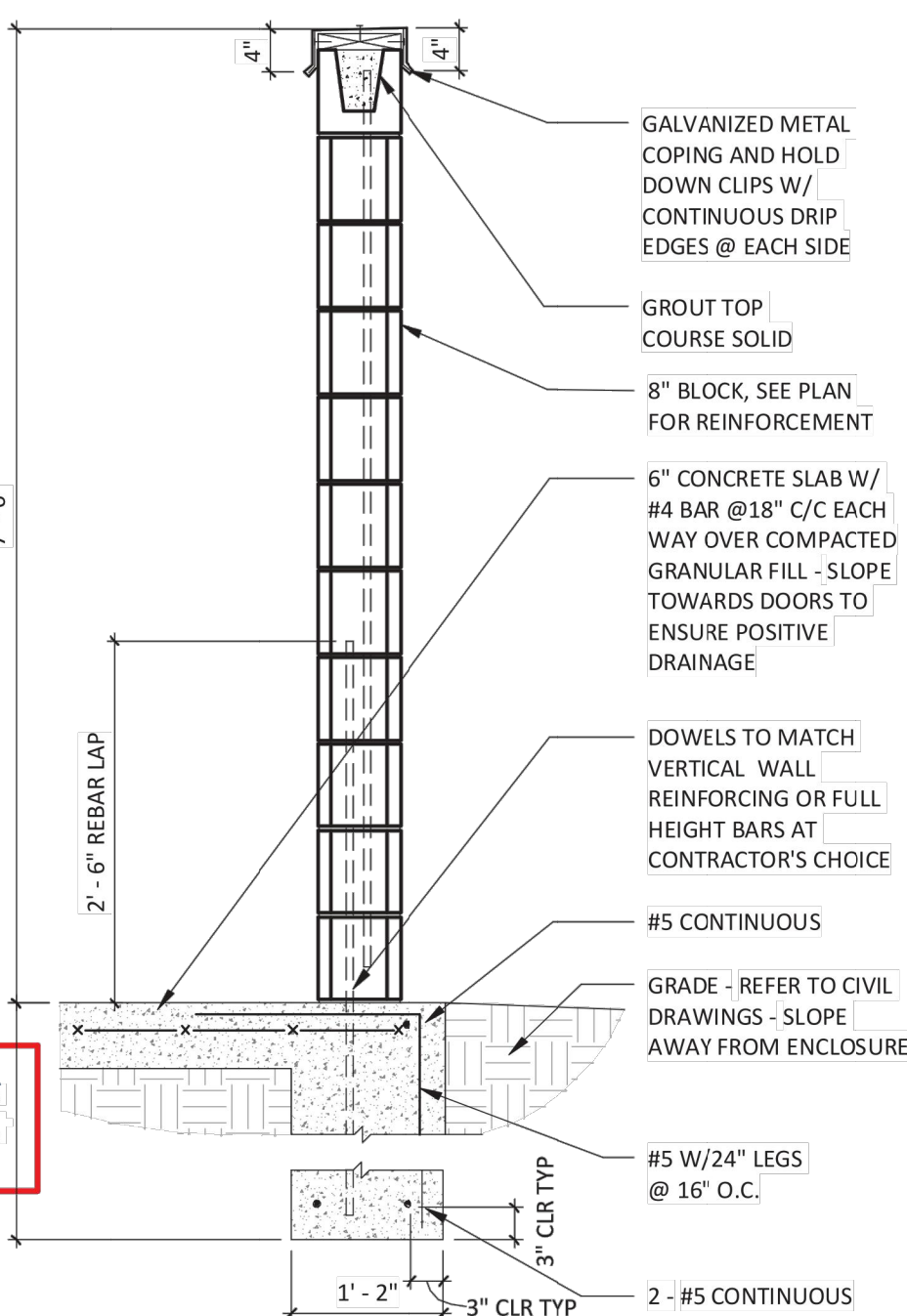
**MAN DOOR PIVOT DETAIL**  
1 1/2" = 1'-0"



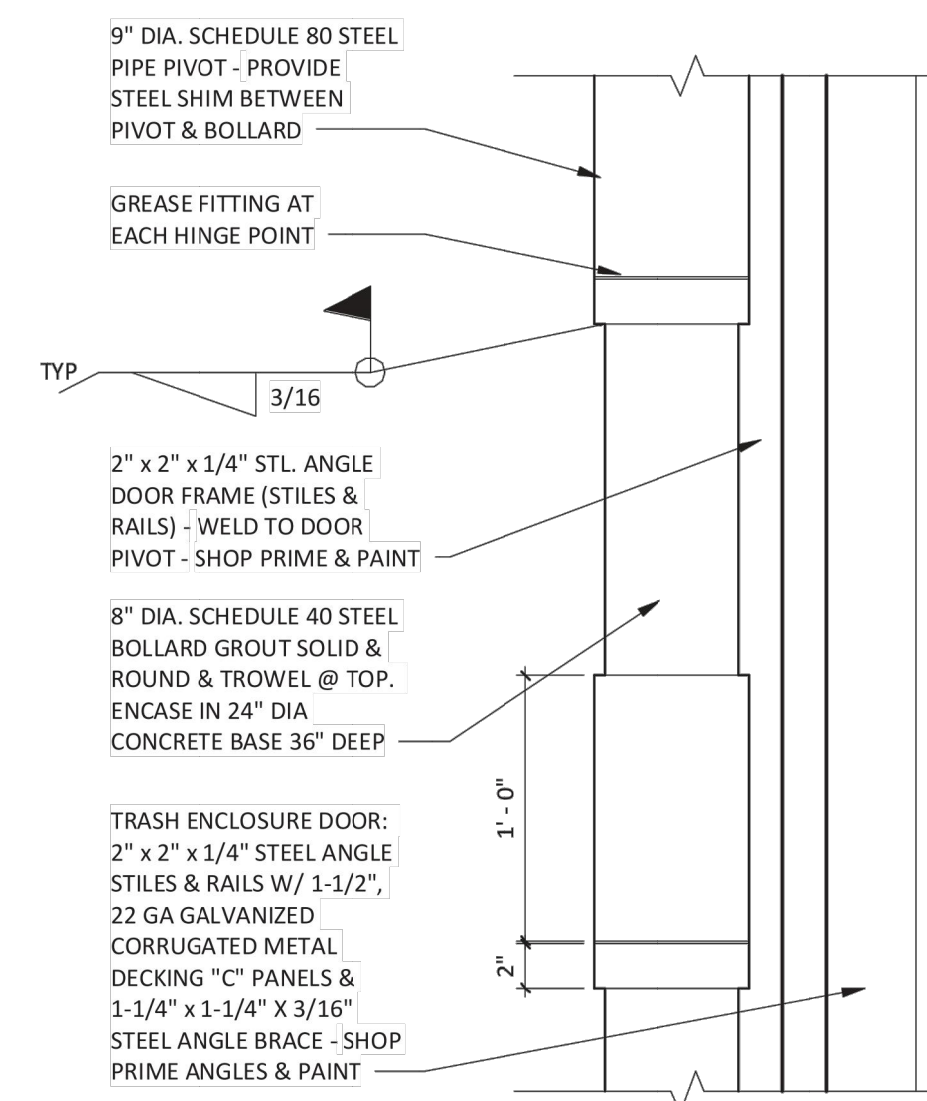
**TYP. BOLLARD DETAIL**  
1/2" = 1'-0"



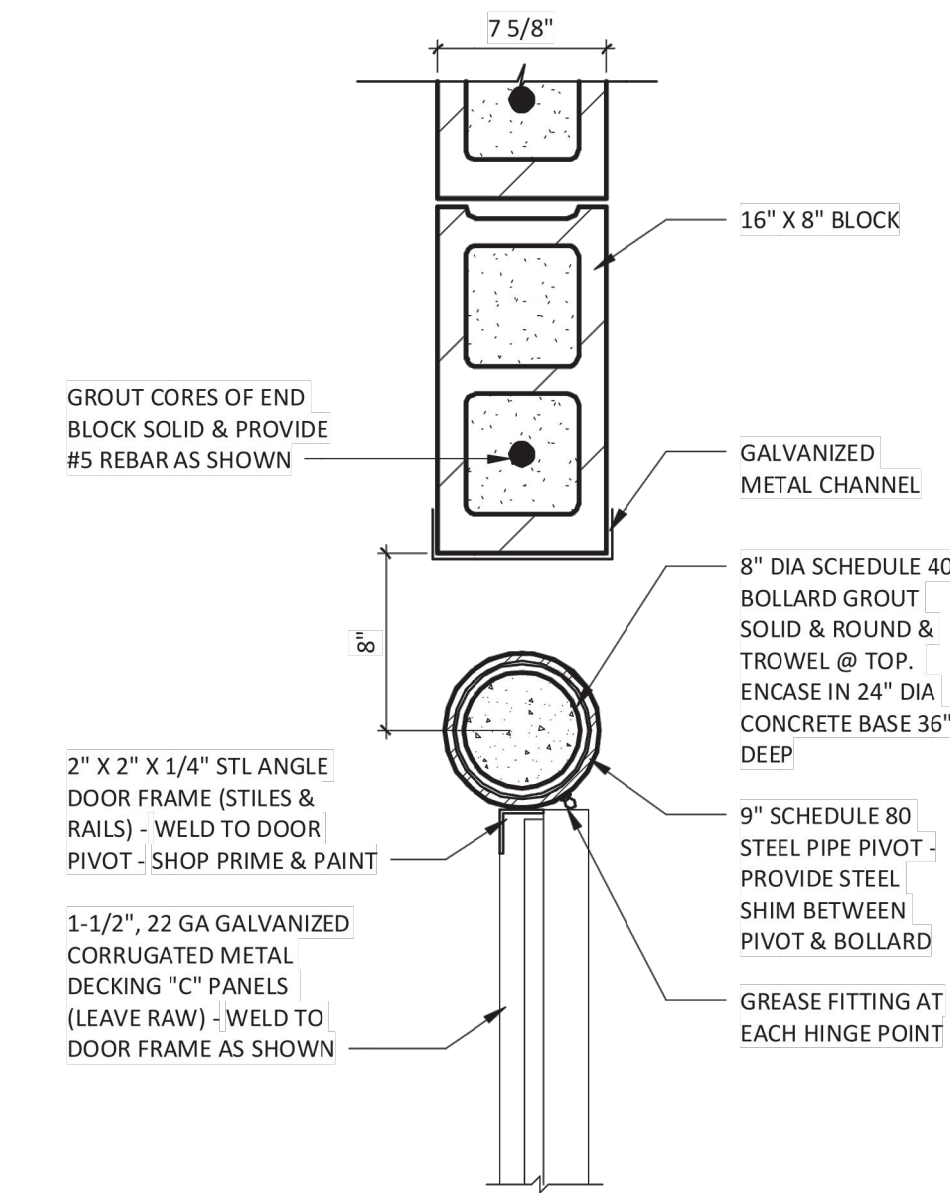
**TYPICAL CANE BOLT DETAIL**  
1 1/2" = 1'-0"



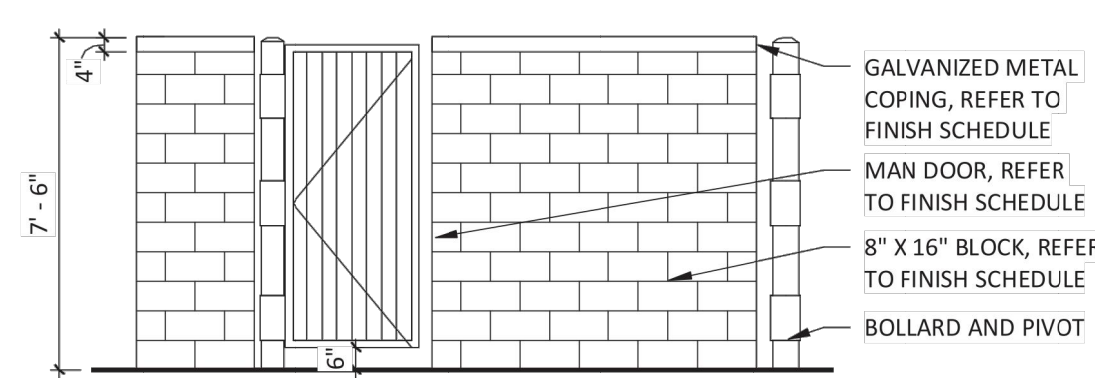
**DUMPSTER DETAIL**  
3/4" = 1'-0"



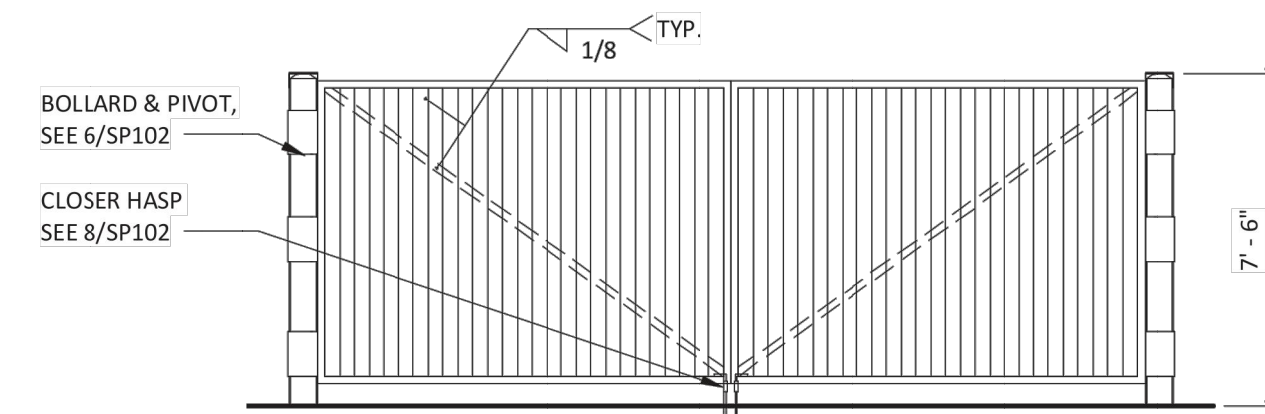
**DUMPSTER DOOR PIVOT**  
1 1/2" = 1'-0"



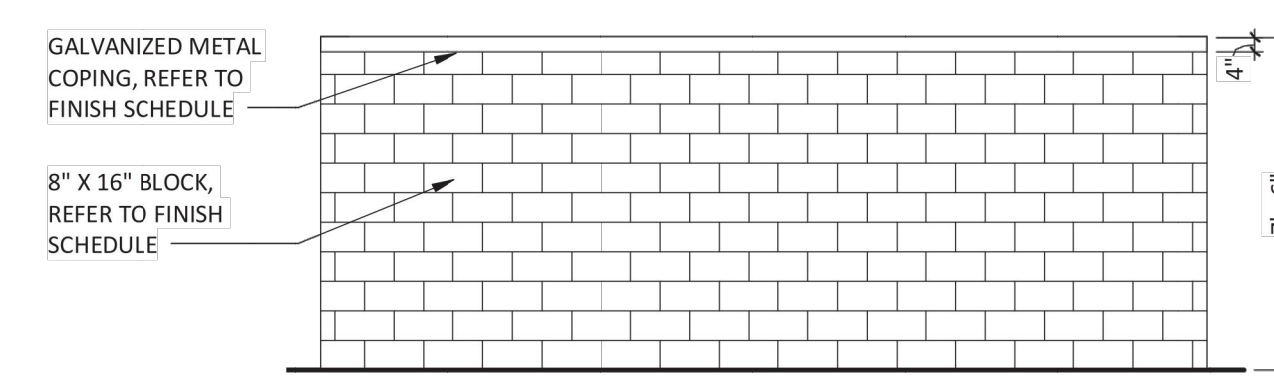
**DUMPSTER WALL DETAIL**  
1 1/2" = 1'-0"



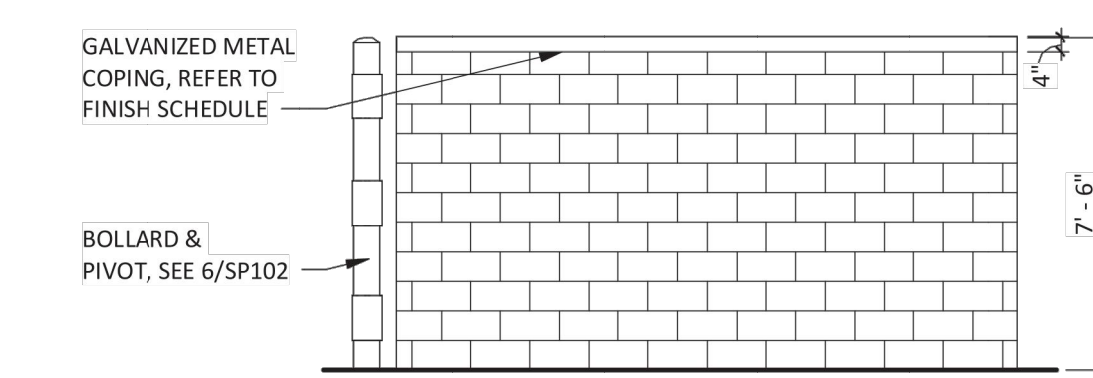
**DUMPSTER ELEVATION**  
1/4" = 1'-0"



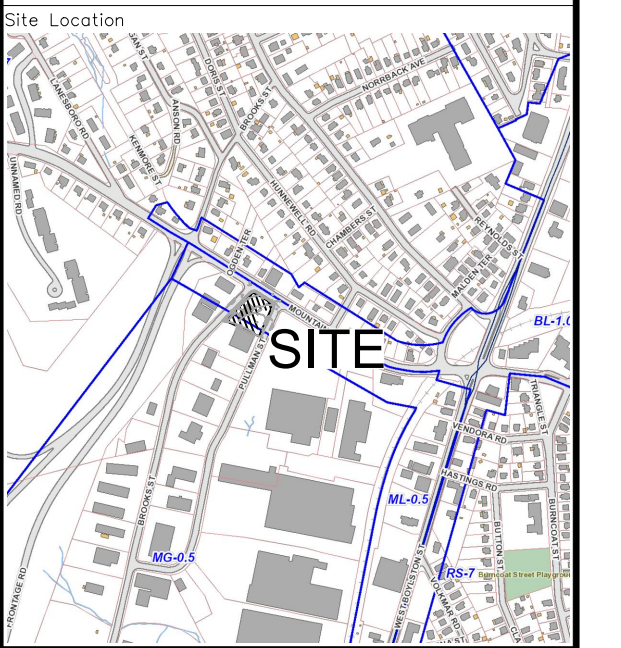
**DUMPSTER ELEVATION**  
1/4" = 1'-0"



**DUMPSTER ELEVATION**  
1/4" = 1'-0"



**DUMPSTER ELEVATION**  
1/4" = 1'-0"



Prepared For  
**LACY TOPAZ, LLC**

37 SUTTON ROAD  
WEBSTER, MA 01570  
(508) 721-0005

Date: Jan. 30, 2024 Scale: 1" = 20'

No.	Revision	Date
1	REVIEW COMMENTS	2/28/24

Project Title  
**PROPOSED COMMERCIAL REDEVELOPMENT**  
79 PULLMAN ST  
Worcester, MA

Issued For  
**Permit**

Not for Construction

Site Details 3

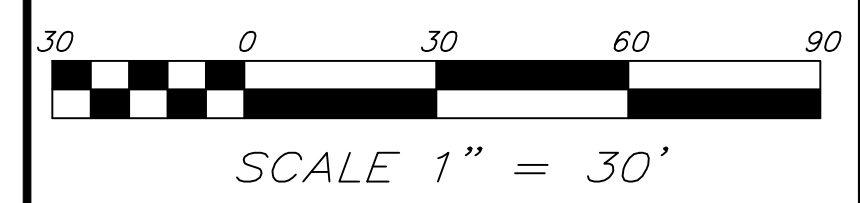
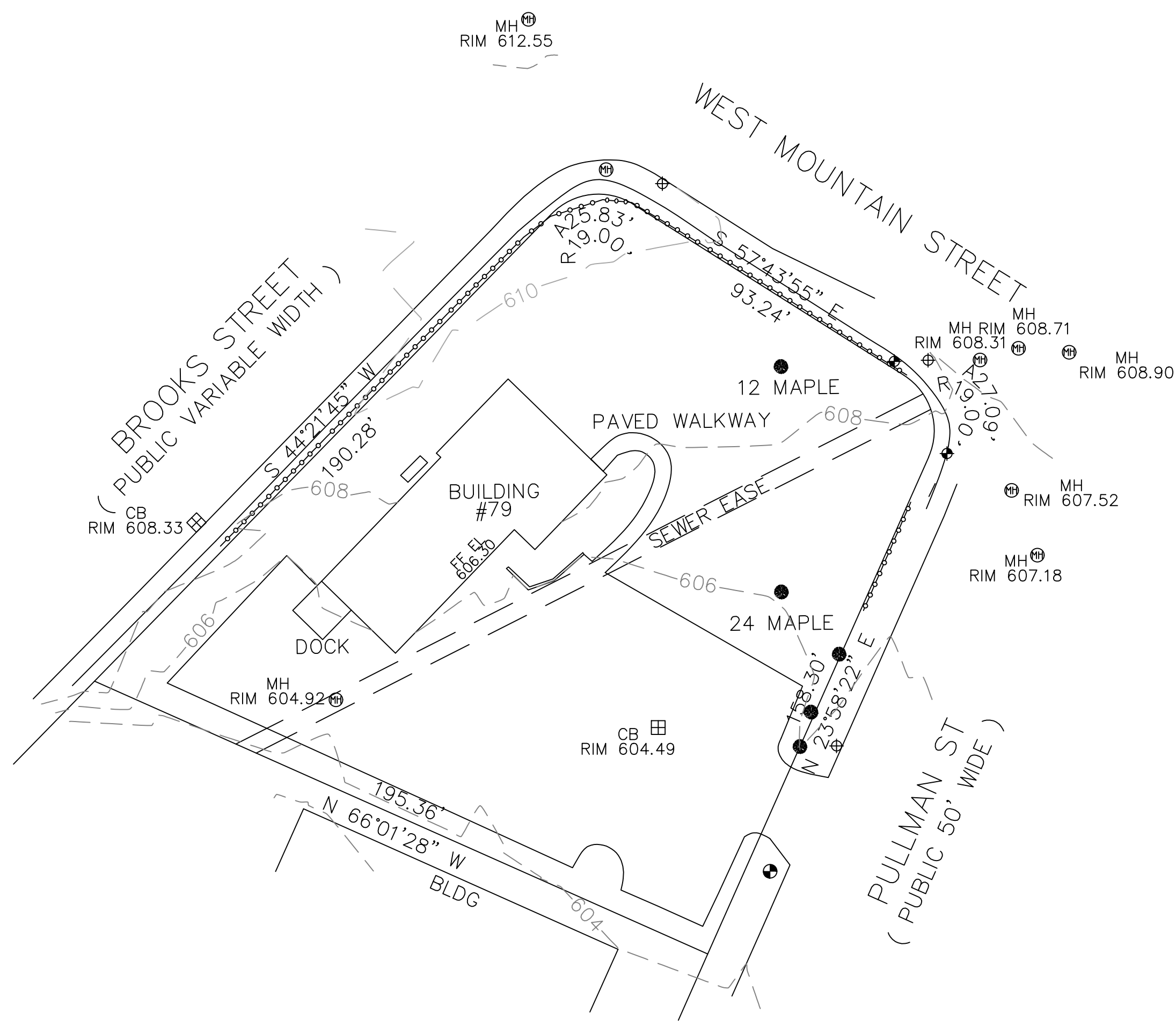
Drawing No.

**C-7**









PLAN REFERENCE(S):  
493-49, 389-121, 891-55

DEED REFERENCE(S):  
22403-115

THIS PLAN SHOWS THE PROPERTY LINES THAT ARE THE LINES OF EXISTING OWNERSHIPS AND THE LINES OF STREETS AND WAYS SHOWN ARE THOSE OF PUBLIC OR PRIVATE STREETS OR WAYS ALREADY ESTABLISHED AND THAT NO NEW LINES FOR DIVISION OF OWNERSHIP OR FOR NEW WAYS ARE SHOWN.



THIS PLAN HAS BEEN PREPARED IN CONFORMITY WITH THE RULES AND REGULATIONS OF THE REGISTER OF DEEDS OF THE COMMONWEALTH OF MASSACHUSETTS.

**hs&t group, inc.**  
 PROFESSIONAL CIVIL ENGINEERS & LAND SURVEYORS  
 75 HAMMOND STREET - 2ND FLOOR  
 WORCESTER, MASSACHUSETTS 01610-1723  
 PHONE: 508-757-4944 EMAIL: INFO@HSTGROUP.NET  
 FAX: 508-752-8895 WWW.HSTGROUP.NET

EXISTING CONDITIONS PLAN  
79 PULLMAN ST WORCESTER MA

APPLICANT(S)/OWNER(S):  
GALAXY DEVELOPMENT

DATE:	01-19-22	COMP'D:	JT	FIELD:	PS
SCALE:	1"=40'	CAD:	JT	FLD. BK:	664-20
ZONE:	ML-5, MG--5	REV'D:	DJT	PULLMAN79SITE	

JOB NUMBER:	7405	SHEET NUMBER:	1 OF 1
DWG NUMBER:	2007		